

ONKOLOŠKI INŠTITUT V LJUBLJANI
INSTITUTE OF ONCOLOGY, LJUBLJANA

REGISTER RAKA ZA SLOVENIJO
CANCER REGISTRY OF SLOVENIA

INCIDENCA RAKA V SLOVENIJI
CANCER INCIDENCE IN SLOVENIA

1994

POROČILO RR ŠT. 36

REPORT No. 36

LJUBLJANA 1997

ISSN 1318-2471

Uredniški odbor

Editorial Board

Vera Pompe Kirn, glavna urednica - Editor-in-chief

Rastko Golouh

Jurij Lindtner

Maja Primic Žakelj

Božena Ravnihar

Zvonimir Rudolf

Branko Zakotnik

Osebjje Registra raka

Staff of the Cancer Registry

Vera Pompe Kirn, vodja - Head

Neva Volk, mlada raziskovalka - Junior researcher

Jurij Modic, računalniška obdelava - EDP analysis

Sašo Celarc, slike - figures

Mojca Brus

Marjeta Bukovec

Neža Milčič

Nataša Robek

Fani Škrlec

Tone Žakelj, oblikovanje tabel in priprava za tisk - desk-top publishing

Izdal Onkološki inštitut, Ljubljana
Published by Institute of Oncology, Ljubljana, Slovenia

Direktor Zvonimir Rudolf
Director

Naslov
Correspondence to

Prof. Vera Pompe Kirn, M.D., D.Sc.
Institute of Oncology
Zaloška c. 2, 1001 Ljubljana, p.p. 17, Slovenia
tel. +386 (0)61 13-24-113

Tisk Grafis
Printed by

VSEBINSKO KAZALO

CONTENTS

	Stran Page
Uvod in pojasnila	5
Introduction and Comments	9
Slike	
Figures	
1. Najpogostejše lokacije raka po spolu - Slovenija 1994 The leading cancer sites by sex - Slovenia 1994	13
2. Groba in kumulativna letna incidenca raka vseh lokacij po spolu - Slovenija 1950-94 Crude and cumulative annual cancer incidence; all sites by sex - Slovenia 1950-94	14
3. Groba letna incidenca izbranih rakov po spolu - Slovenija 1950-94 Crude annual cancer incidence by selected primary sites and sex - Slovenia 1950-94	15
4. Nove bolnice z rakom dojk po bolnišnicah diagnoze ter pričetka in nadaljevanja prvega zdravljenja - Slovenija 1994 New breast cancer patients by hospitals of diagnosis and first treatment - Slovenia 1994	16
5. Nove bolnice z rakom dojk po stadijih ob diagnozi - Slovenija 1994 New breast cancer patients by stage at diagnosis - Slovenia 1994	17
6. Način prvega zdravljenja bolnic z rakom dojk po stadiju - Slovenija 1994 First treatment modality of breast cancer patients by stage - Slovenia 1994	18
7. Novi bolniki s sarkomi mehkih tkiv po bolnišnicah diagnoze ter pričetka in nadaljevanja prvega zdravljenja - Slovenija 1994 New patients with soft tissues sarcoma by hospitals of diagnosis and first treatment - Slovenia 1994	21
Preglednice	
Tables	
1. Prebivalstvo Slovenije po starosti in spolu na dan 30. junija 1994 Population of Slovenia by age and sex on June 30th, 1994	23
2. Prebivalstvo Slovenije po zdravstvenih regijah po spolu na dan 30. junija 1994 Population of Slovenia by health regions by sex on June 30th, 1994	24

3.	Število novih primerov raka ter število in odstotek primerov, registriranih samo iz zdravniških poročil o vzroku smrti, po lokaciji in spolu - Slovenija 1994 Total number of new cancer cases, number and percentage of cases registered from death certificates only, by site and sex - Slovenia 1994	25
4.	Število novih primerov raka po lokaciji, spolu in starosti - Slovenija 1994 Number of new cancer cases by primary site, sex, and age - Slovenia 1994	29
5.	Incidenca raka na 100 000 prebivalcev po lokaciji, spolu in starosti - Slovenija 1994 Cancer incidence per 100 000 population by site, sex and age - Slovenia 1994	33
6.	Število novih primerov raka po zdravstvenih regijah, po najpogostejših lokacijah in spolu - Slovenija 1994 Number of new cancer cases by health regions, by most frequent sites and sex - Slovenia 1994	39
7.	Število novih primerov raka, ugotovljenih v bolnišnicah, ter število in odstotek mikroskopsko potrjenih primerov, po lokaciji in spolu - Slovenija 1994 Total number of new cancer cases diagnosed in hospitals and number and percentage of microscopically confirmed cases - by site and sex - Slovenia 1994	40
8.	Število histološko (in citološko) potrjenih novih primerov raka - po histološki vrsti in lokaciji - Slovenija 1994 Number of histologically (and cytologically) confirmed new cancer cases by histologic type and site - Slovenia 1994	44
9.	Število primerov ne-Hodgkinovih limfomov po lokaciji, spolu in starosti - Slovenija 1994 Total number of non-Hodgkin's malignant lymphomas by site, sex, and age - Slovenia 1994	50
10.	Število novih primerov raka po bolnišnicah ugotovitve diagnoze ter število in odstotek primerov, napotenih na Onkološki inštitut - Slovenija 1994 Number of new cancer cases diagnosed by reporting hospitals, and number and percentage of cases referred to the Institute of Oncology, Ljubljana - Slovenia 1994	51
11.	Število in odstotek novih primerov raka, ugotovljenih v bolnišnicah, po stadiju, lokaciji in spolu - Slovenija 1994 Number and percentage of new cancer cases reported by hospitals by stage, site and sex - Slovenia 1994	53

UVOD

Register raka za Republiko Slovenijo (Register) je bil ustanovljen pri Onkološkem inštitutu v Ljubljani leta 1950 na pobudo in pod vodstvom profesorice dr. Božene Ravnihar kot posebna služba za zbiranje in obdelavo podatkov o incidenci raka in o preživetju bolnikov z rakom. Prijavljanje raka je od takrat dalje v Republiki Sloveniji obvezno, z zakonom predpisano (*Ur. l. SRS*, št. 10/50, št. 29/50, št. 14/65, št. 1/80, št. 45/82, št. 42/85 in *Ur. l. RS*, št. 9/92). Podrobneje ga zaenkrat še vedno določa Pravilnik o prijavi in kontroli rakavih bolnikov in o drugih tehničnih vprašanjih boja proti raku (*Ur. l. SRS*, št. 4/66).

Incidenca raka je po svetu zelo različna. Tudi Republika Slovenija kaže v zboleznosti za rakom svojo posebno sliko. Zbrani podatki so številčna podlaga za ocenjevanje družbenega bremena rakavih bolezni v republiki, programiranje in ocenjevanje onkološkega varstva na področju primarne preventive, detekcije, diagnostike, zdravljenja, rehabilitacije, načrtovanje zmogljivosti in sredstev zdravstvenega varstva, ki so potrebna za obvladovanje rakavih bolezni (kadri, medicinska oprema, posteljne zmogljivosti), ter za klinične in epidemiološke raziskave v Sloveniji in v sklopu širših mednarodnih raziskav.

Populacijski register raka opravičuje svoj obstoj le, če se zbrani podatki tudi redno obdelujejo in objavljajo. Ena izmed stalnih oblik vračanja obdelanih informacij so prav letna poročila. Ker je virov informacij več, leta povsod po svetu izhajajo z dve- ali večletnim zamikom.

Register je prva letna poročila izdajal že v letih 1953-1957 za leta 1951-1955. Prva analiza podatkov za leto 1950 je bila objavljena v *Zdravstvenem vestniku* leta 1951 (*Zdrav. Vestn.* 1951: 20, 264-277). Podatki za leta 1957-1971 so bili objavljani v periodičnih publikacijah Svetovne zdravstvene organizacije *Epidemiological and Vital Statistics Report* Vol. 14, No. 11, 1961; Vol. 16, No. 12, 1963; Vol. 17, No. 12, 1964; Vol. 19, No. 12, 1966; Vol. 20, No. 12, 1967) in v *World Health Statistics Report* (Vol. 23, No. 3, 1970; Vol. 24, No. 2, 1971; Vol. 25, Nos. 4, 5, 1972; Vol. 26, No. 8, 1973; Vol. 27, Nos. 6, 7, 1974). Podatki od leta 1965 dalje so bili spet redno objavljani v posebnih letnih poročilih z naslovom *Rak v Sloveniji (1965-1977)* oziroma *Incidenca raka v Sloveniji (1978-1993)* v slovenskem in angleškem jeziku. Glede na želje in pripombe uporabnikov poizkušamo ta letna poročila iz leta v leto dopolnjevati. Pri tem nam pomaga uredniški odbor, v katerem so zbrani specialisti različnih vej onkologije (kliniki, epidemiologi in patologi).

Naš Register je ena prvih tovrstnih služb v Evropi. Pred letom 1950 so bili populacijski registri raka ustanovljeni le v Hamburgu, na Danskem, v Veliki Britaniji, v Belgiji in v tedanji ZSSR. Prav zato so in so bili naši podatki o incidenci raka zanimivi tudi za širši svet. Leta 1957 je izšlo prvo obsežnejše poročilo za leta 1950-1955 v angleščini *Cancer in Slovenia 1955* (B. Ravnihar, A. Valentin, T. Božič, J. Doič, D. Pečirer). Podatke za leta 1956-1960, 1961-1965, 1968-1972, 1973-1976, 1978-1981 in 1982-1987 so objavili tudi v vseh šestih zvezkih knjige *Cancer Incidence in Five Continents*, UICC, Ženeva (Vol. 1-1966, eds. Doll R., Payne P., Waterhouse J.; Vol. 2-1970, eds. Doll R., Muir C., Waterhouse J.), in IARC, Lyon (Vol. 3-1976, eds. Waterhouse J., Muir C., Correa C., Powell J.; Vol. 4-1982, eds. Waterhouse J., Muir C., Shanmugaratnam K., Powell J.; Vol. 5-1987, eds. Muir C., Waterhouse J., Mack T., Powell J., Whelan S.; Vol. 6-1992, eds. Parkin M., Muir C., Whelan S., Gao Y., Ferlay J., Powell J.). Sedmi zvezek s podatki za obdobje 1988-1992 je v tisku. Podatki o incidenci in umrljivosti za rakom za leta 1983-1990 so vključeni tudi v podatkovno bazo *Mreže evropskih registrov raka EUROCIM*, ki jo vzdržujeta Evropska komisija programa *Evropa proti raku* in *Mednarodna agencija za raziskovanje raka*.

V letu 1993 smo prešli na sodobnejšo, s programom *Oracle* podprto računalniško obdelavo podatkov na lastnem računalniku *Unix, SiliconGraphics IRIS4D/310S*. Zbrane podatke tako lažje obdelujemo še podrobneje v skladu s trenutno perečo problematiko v Sloveniji, našim raziskovalnim programom in željami naših uporabnikov. Ti podatki so objavljeni v domačem in tujem strokovnem tisku ter po potrebi tudi v dnevnikih časopisih. V letu 1991 je izredno veliko število uporabnikov zanimalo pojavljanje raka na območju posameznih občin. Ker je za tovrstno analizo v enem letu v Sloveniji premalo primerov, smo leta 1992 izdali še posebno publikacijo za de-

setletno obdobje, *Zemljevidi incidence raka v Sloveniji, 1978-1987*. Leta 1995 pa je izšla s slovensko-angleškim besedilom knjiga *Preživetje bolnikov z rakom v Sloveniji 1963-1990*. Barvne slike in tabele s podatki o pričakovnem, opazovanem in relativnem preživetju bolnikov z rakom v šestih časovnih obdobjih spremljajo komentarji klinikov-onkologov. Knjigo še lahko kupite v Registru raka po sponzorirani ceni 3000 SIT (študenti 1500 SIT). Lahko pa jo naročite tudi s priloženo naročilnico.

GRADIVO IN POJASNILA

Podatke dobivamo iz posebnih Prijavnic rakave bolezni iz vseh bolnišnic in diagnostičnih centrov v Sloveniji. Dopolnjujemo jih še z zdravniškimi poročili o vzroku smrti in s podatki iz obdukcijjskih zapisnikov, v katerih je navedena diagnoza rak ter s prijavnicami iz zdravstvenih domov.

Incidenca pomeni število vseh v enem koledarskem letu na novo ugotovljenih primerov raka, ki jih Registru prijavljajo bolnišnice (tudi če je bila diagnoza rak ugotovljena šele pri obdukciji) ali zdravstveni domovi (v primeru, če bolnik ni bil napoten v bolnišnico), plus število v istem letu umrlih, pri katerih je bil rak ugotovljen šele ob smrti in so prišli v evidenco Registra samo na podlagi zdravniškega poročila o vzroku smrti. V incidenco ne štejemo novih primarnih rakov parnega organa iste lokacije, če je bila histološka vrsta obeh rakov, npr. leve in desne dojke, enaka. Prav tako v incidenco ne štejemo novega pojava raka iste histološke vrste na istem organu, npr. multiple lezije v debelem črevesu. Tabele prikazujejo podatke o prebivalcih in incidenci raka v Sloveniji v letu 1993 po spolu, starosti, lokaciji, histološki vrsti in stadiju bolezni ob diagnozi ter o incidenci po zdravstvenih regijah in območjih zdravstvenih domov, kot tudi podatke o številu novih primerov raka, ugotovljenih v tem letu po posameznih bolnišnicah. Zbiranje podatkov smo zaključili 15. januarja 1997. Njihovo zanesljivost osvetljujeva dva kazalca: odstotek primerov raka, registriranih samo iz zdravniških poročil o vzroku smrti (tabela 3), in odstotek mikroskopsko (histološko ali citološko) potrjenih primerov (tabela 7).

Slike 1-3 prikazujejo tiste podatke, ki naše uporabnike največkrat zanimajo: to je najpogostnejše lokacije raka po spolu ter trendi incidence vseh in izbranih rakov po spolu.

Slike 4-7 kažejo pretok bolnic z rakom dojk in bolnikov s sarkomi mehkih tkiv (SMT) v letu 1994 ter načine prvega zdravljenja. Z njimi želimo bralca opozoriti na pomen dogovorjenega, v danem času priporočenega načina zdravljenja. Pri raku, ki ga je veliko (rak dojk, prek 700 novih primerov), je pomebna doktrina zdravljenja, pri raku, ki ga je malo (SMT, 60 novih primerov), pa centralizacija diagnostike in zdravljenja v eni, za to usposobljeni ustanovi.

Bolnice z rakom dojk so deležne prvega zdravljenja v več slovenskih zdravstvenih ustanovah (slika 4). Delež Onkološkega inštituta pri prvem zdravljenju se je manjšal v obdobju 1983-89. Po pričujočih podatkih za leto 1994 (418 bolnic = 61 %) pa se zdi ta delež ustaljen. Maribor je za Ljubljano najpomembnejši center. Povezava bolnišnic z Onkološkim inštitutom je različno močna: od 38 % (skoraj dve tretjini bolnic zdravijo sami) do 100 % (vse bolnice prično ali nadaljujejo zdravljenje na Onkološkem inštitutu). Kar zadeva stadij bolezni (slika 5), je delež razsejane bolezni za slovenske razmere pričakovan. Na ostala deleža je mogoče vplivati z zgodnejšo ugotovitvijo bolezni. Pri zdravljenju bolnic (slika 6) z lokalizirano boleznijo so podatki o deležu kirurškega zdravljenja pričakovani. Slaba desetina bolnic, zdravljenih hormonsko, gre na rovaš starih bolnic. Pri zdravljenju bolnic z regionarno razširjeno boleznijo ne preseneti kirurško zdravljenje kot osnovno, prav tako ne hormonsko zdravljenje samo, pač pa desetina bolnic, ki so zdravljene samo kirurško. Zdravljenje bolnic z razsejano boleznijo je razumljivo zelo različno, odvisno od stopnje razširjenosti bolezni in prizadetosti bolnic.

SMT so redka bolezen (le slab odstotek vseh rakavih bolezni) (slika 7). Podrobneje smo jih predstavili že v poročilu za leto 1992. Ozdravljivi so lahko v visokem odstotku, če je le prvo zdravljenje v zgodnjih stadijih bolezni ustrezno. Glavni način zdravljenja SMT odraslih bolnikov je radikalna operacija (radikalnost operacije potrди patolog). Obsevanje in kemoterapija sta le dopolnilna načina. Na Onkološkem inštitutu ugotovljamo, da večina zdravnikov izve za diagnozo bolnika šele po operaciji (34 od 44 bolnikov), ko je za načrtovanje uspešnega

prvega zdravljenja že prepozno. Zato je smiselno ob sumu na SMT bolnika napotiti na Onkološki inštitut v Ljubljani, kjer so možni vsi načini onkološkega zdravljenja in ustrezna patomorfološka diagnostika pred operacijo, med njo in po njej.

V letu 1993 smo uvedli obvezno prijavljanje vseh sprememb materničnega vratu označenih kot CIN III. V tabelah 3-7 tako letos drugič navajamo število vseh primerov, prijavljenih kot CIN III. Mednje so šteti tudi tisti, ki so bili označeni kot intraepitelijski in so bili v preteklih letih navedeni v teh tabelah pod šifro 2340. Število vseh primerov CIN III je dvakrat večje od števila primerov, prijavljenih kot intraepitelijski karcinom. Primerjava s podatki za obdobje 1961-92 tako ni možna.

Zanesljivost podatkov za leto 1994, 4 % primerov, registriranih samo s pomočjo zdravniških poročil o vzroku smrti (tabela 3), je za 1 % slabša kot v preteklih 10 letih. 3 % so realen delež rakavih bolnikov, ki v Sloveniji zaradi starosti in/ali napredovale bolezni ni bil preiskovan in zdravljen v bolnišnici, dodaten 1 % pa je posledica slabšega sodelovanja s patronažno službo nekaterih zdravstvenih domov v Sloveniji pri ugotavljanju zanesljivosti diagnoze bolnikov, ki so umrli doma in pri katerih je bil kot vzrok smrti naveden rak.

V tabeli 4 navedeno število zbolelih otrok je mejah pričakovanega.

Tabela 5 prikazuje incidenco na 100 000 prebivalcev. Število vseh novih primerov raka iz leta 1994 je preračunano na število prebivalcev R Slovenije na dan 30. junija tega leta (tabela 1). To je t.i. groba incidenčna mera. Starostno standardizirane incidenčne mere pa izločajo vpliv razlik v starostni strukturi prebivalstva v posameznih letih obdobja opazovanja, v našem primeru staranja prebivalcev R Slovenije v letih 1950-94. Na sliki 2 prikazujemo starostno standardizirane podatke po Dayevi metodi izračuna kumulativne incidence od 0. do vključno 74. leta starosti na 100 prebivalcev. Stare metode direktne in indirektno standardizacije so sicer še v rabi, vendar imajo to slabo lastnost, da dajejo pri velikih razlikah med opazovano in standardno populacijo nerealne (navidezno prevelike ali premajhne) vrednosti tako izračunanih incidenčnih mer (*Cancer Incidence in Five Continents*, Vol. 5, 1987: 787-789). Kumulativna incidenčna mera na 100 prebivalcev je petkratna vsota starostno specifičnih incidenc na 100 prebivalcev posameznih petletnih starostnih skupin. Day jo opredeljuje kot direktno, na dejansko populacijo posamezne petletne starostne skupine standardizirano incidenco. Tolmačimo si jo kot tveganje, ki ga ima novorojenček, da do 75. leta starosti zbolijo za rakom. Kumulativna incidenca 5,2/100 za raka dojk pri ženskah pomeni npr., da bo 5,2 % novorojenk do 75. leta starosti verjetno zbolelo za rakom dojk. Razred velikosti kumulativnih incidenčnih mer na 100 prebivalcev je drugačen kot pri grobih incidenčnih merah na 100 000 prebivalcev. Primerjava oblike krivulj nam kaže, da lahko staranju našega prebivalstva pripišemo naraščanje raka predvsem pri ženskah, medtem ko pri moških očitno k temu prispevajo še drugi dejavniki tveganja.

Na različno starostno strukturo območij zdravstvenih regij moramo pomisliti tudi pri uporabi in razlagi podatkov tabele 6. Njen prvoten namen je bil prikazati število novozbolelih za operativne namene načrtovanja zmogljivosti in sredstev zdravstvenega varstva na območjih zdravstvenih regij. Tako v tej tabeli prikazujemo tudi podatke o številu novih primerov CIN III. Za druge namene, predvsem za iskanje vzrokov takšnega ali drugega pojavljanja raka, je treba podatke najprej starostno standardizirati. Kako vpliva različna starostna struktura na incidenčne mere, je razvidno iz že omenjene knjige *Zemljevidi incidence raka v Sloveniji*, ki prikazuje tako grobe kot kumulativne incidenčne mere za vse in najpogostejše rake po območjih bivših občin.

Lokacije raka smo šifrirali še po 8. reviziji *Mednarodne klasifikacije bolezni* (MKB-8). Po tej klasifikaciji smo uvrstili med šifre 196-199 tiste primere raka, pri katerih primarne lokacije ni bilo mogoče ugotoviti. Takšni primeri z metastazami v bezgavkah so npr. uvrščeni v šifro 196. Osmo revizijo smo uporabili zaradi možne primerjave podatkov v tem poročilu s poročili od vključno 1970. leta dalje.

V tabelah 7 in 8 je navedeno število vseh mikroskopsko, to je histološko ali citološko potrjenih novih primerov raka. V tabeli 8 so ločeno navedeni primeri, ki so histološko potrjeni, in tisti, ki so potrjeni samo citološko (ti primeri so navedeni v oklepaju). Vsota vseh je enaka številu vseh mikroskopsko potrjenih primerov, navedenem v tabeli 7. Histološke vrste v tabeli 8 so šifrirane po 2. reviziji šifranta ICD-O (WHO, 1991). Združili smo jih v smiselne skupine za namene tega poročila. To pa ne izključuje individualne obdelave po katerikoli

šifri navedenega šifranta ICD-O, npr. izpisa redkih histoloških vrst, kot so Burkittovi limfomi. Iz te tabele lahko razberemo tudi primarne lokacije ekстранodalnih malignih limfomov in njihovo število. Ekстранodalni maligni limfomi so namreč dosledno uvrščeni med ustrezne šifre primarne lokacije raka.

Starostno porazdelitev ekстранodalnih in nodalnih lokacij ne-Hodgkinovih malignih limfomov kaže tabela 9. Zaradi majhnega števila prikazujemo le absolutna števila.

V tabeli 10 so navedene klinike in bolnišnice prve prijave rakave bolezni.

Tabela 11 prikazuje stadije ob ugotovitvi bolezni. Opredelitev stadijev solidnih tumorjev ne sledi pravilom *klasifikacije TNM*, ampak dogovorjenim pravilom registrov raka, ki pri opredeljevanju stadija upoštevajo vse preiskovalne metode, vključno operacijo; če bolnik ni bil predhodno zdravljen, pa tudi obdukcijo. Maligni limfomi so opredeljeni po *klasifikaciji Ann-Arbor*. Podobno kot za histološke vrste je možen tudi izpis podatkov po *klasifikaciji TNM*, v kolikor so bili podatki ustrezno šifrirani na prijavnica h oziroma že v popisih bolezni.

V tabele so vključeni le podatki o bolnikih, ki imajo stalno bivališče na območju Republike Slovenije, ne glede na to, kje so bili zdravljeni.

ZAHVALA

Zahvaljujemo se vsem zdravnikom, medicinskim sestram in administrativnemu osebju, ki so nam vestno in redno pošiljali podatke o novozbolelih rakavih bolnikih in njihovi nadaljnji usodi. Prav posebej se zahvaljujemo sodelavkam Bolnišničnega registra Onkološkega inštituta v Ljubljani: Ani Dotzauer, Maruški Ferjančič in Nadi Jamšek, ki so z vodenjem evidence in s skrbnim izpisovanjem in šifriranjem podatkov iz popisov bolezni prispevale vsaj polovico v tem poročilu obdelanih podatkov.

Uredniški odbor

Ljubljana, 15. 1. 1997

INTRODUCTION

The Cancer Registry of Slovenia (Registry) was founded in 1950 at the Institute of Oncology in Ljubljana, on the initiative and under the leadership of Prof. Božena Ravnihar, MD, as a special service for collecting and processing data on cancer incidence and cancer patients' survival. Since then notification of cancer has been compulsory in Slovenia (*Official Gazette of SRS*, No. 10/50, No. 29/50, No. 14/65, No. 1/80, No. 45/82, No. 42/85, and *Official Gazette of RS*, No. 9/92). Detailed definition on this is given in the Regulations on notification and follow-up of cancer patients and other technical aspects of anticancer activities. (*Official Gazette of SRS*, No. 4/66).

Cancer incidence in the world varies greatly. The Republic of Slovenia also shows its specific cancer incidence pattern. The collected data serve as a basis for the assessment of cancer burden, for programming and evaluation of primary prevention, detection, diagnosis, treatments, rehabilitation, for planning facilities and funding needed for cancer control, hospital capacities and equipment, as well as for clinical and epidemiological research in Slovenia and in different multicentric international projects.

The existence of a population-based cancer registry is justified only by regular processing and publication of the collected data. The Registry's Annual Reports represent a permanent feed-back information. Because of many different data sources and data contributors, almost all cancer registries practise at least a two year period delay before publishing.

The first analysis of data for 1950 was published in *Zdravstveni vestnik* in 1951, whereas the first annual reports of the Registry for the period 1951-1955 were issued during the years 1953-1957. The data for the period 1957-1971 appeared in periodicals edited by World Health Organization - *Epidemiological and Vital Statistics Report*, Vol. 14, No. 11, 1961; Vol. 16, No. 12, 1963; Vol. 17, No. 12, 1964; Vol. 19, No. 12, 1966; Vol. 20, No. 12, 1967), as well as in *World Health Statistics Report* (Vol. 23, No. 3, 1970; Vol. 24, No. 2, 1971; Vol. 25, Nos. 4, 5, 1972; Vol. 26, No. 8, 1973; Vol. 27, Nos. 6, 7, 1974). The data from 1965 on have again appeared regularly in special annual reports, first entitled *Cancer in Slovenia (1965-1977)*, and afterwards *Cancer Incidence in Slovenia (1978-1993)*; the publication appears in Slovene and English. Our constant endeavours are directed into further improvement of these publications, taking into account the requests and comments of the users. In this, the support of our editorial board consisting of experts - oncologists of different specialities (i.e. clinicians, epidemiologists and a pathologist) proves to be very helpful.

Our Registry is one of the oldest services of this type in Europe. Before 1950, population-based cancer registries existed only in Hamburg (Germany), Denmark, Great Britain, Belgium and in the former Soviet Union. Therefore, our data on cancer incidence are interesting for a wide circle of professionals abroad. In 1957, the first comprehensive report in English for the period 1950-1955 entitled *Cancer in Slovenia* was issued (B. Ravnihar, A. Valentin, T. Božič, J. Doič, D. Pečirer). The data for periods 1956-1960, 1961-1965, 1968-1972, 1973-1976, 1978-1981, 1982-1987 were reported in all six volumes of the publication *Cancer Incidence in Five Continents* issued by UICC, Geneva (Vol. 1, 1966, eds. Doll R., Payne P., Waterhouse J.; Vol. 2, 1970, eds. Doll R., Muir C., Waterhouse J.), and IARC, Lyon (Vol. 3, 1976, eds. Waterhouse J., Muir C., Correa C., Powell J.; Vol. 4, 1982, eds. Waterhouse J., Muir C., Shanmugaratnam K., Powell J.; Vol. 5, 1987, eds. Muir C., Waterhouse J., Mack T., Powell J., Whelan S.; Vol. 6, 1992, eds. Parkin M., Muir C., Whelan S., Gao Y., Ferlay J., Powell J.). Volume seven with data for the period 1988-1992 is in press. The data on cancer incidence and mortality for the years 1983-1990 are also included in EUROCIM, the data base of the *Network of European cancer registries*, maintained by the European Commission of *Europe Against Cancer* program, and *IARC (International Agency for Research on Cancer)*. In 1994 we started to perform computer data analyses with the *Oracle* relational data base support on our own *Unix - Silicon Graphics IRIS4D/310S* server. This facilitates detailed analyses of the collected data, in accordance with the current problems in Slovenia, as well as with respect to our research program and individual needs of our users. These data are published in the national and foreign medical literature and in the daily print, when necessary. In 1992, a special publication covering a ten-year period, *Atlas of Cancer Incidence in Slovenia, 1978-1987* was published. In 1995, a book entitled "Cancer patients survival in Slo-

venia, 1963-1990" with Slovene-English text was published. The color pictures and tables presenting the data on expected, observed and relative survival of cancer patients in 6 time periods are explained by clinicians-oncologists' comments. The book can still be purchased in the Cancer Registry at a reduced price of 3000 SIT (students 1500 SIT), or it can be ordered by the enclosed order form.

MATERIAL AND COMMENTS

The main sources of data are notifications gathered from all hospitals and diagnostic centers in Slovenia. This information is completed by death certificates and autopsy protocols stating cancer diagnosis, and by notifications from regional health centres.

Incidence represents the number of newly diagnosed cancer cases reported to the Registry in a given calendar year by regional hospitals (also if the diagnosis of cancer was established on autopsy only) or regional health centres (in the cases when the patient has not been referred to hospital), as well as of cases brought to the attention of the Registry only on the basis of death certificates. New primary cancers of the same histology in paired organs were not comprised in the incidence figures, neither were any new cancers of the same histology appearing in the same organ, e.g. multiple lesions of the colon. In tables, data on population and on cancer incidence in Slovenia in 1994 by sex, age, site, histologic type, stage at diagnosis, health regions and health centre districts, and by reporting hospitals are presented. Data were collected till January 15, 1997. Their reliability is indicated by two parameters, i.e. the percentage of cancer cases registered from death certificates alone (Table 3), and the percentage of microscopically (histologically or cytologically) confirmed cases (Table 7).

Figures 1-3 present the data our readers are most frequently interested in: the most frequent cancer sites by sex, and the incidence trends for all and selected sites by sex.

Figures 4-7 present the flow of the patients with breast cancer and soft tissue sarcoma and the first treatments they were exposed to in the year 1994. With these data, we wish to call the reader's attention to the significance of the treatment doctrine recommended in a given period. In treating of frequent cancers, e.g. breast cancer (700 new cases), the treatment doctrine is fairly important, whereas in less frequent cancers, e.g. soft tissue sarcomas (60 new cases only), both the diagnostics as well as treatment, which should be performed in one and the same particularly specialized institution, are important.

Breast cancer patients in Slovenia receive the first treatment in several health institutions (Figure 4). In the period from 1983 to 1989, the involvement of the Institute of Oncology in Ljubljana in the first treatment considerably declined. According to the 1994 data (418 patients = 61%), the Institute's involvement seems to be steady. Beside the Institute in Ljubljana the most important breast cancer treatment center in Slovenia is in Maribor. The percentage of mutual cooperation between hospitals in Slovenia, on the one hand, and the Institute of Oncology on the other, varies from 38% (almost one third of patients is treated in local hospitals) to 100% (all patients receive primary as well as additional treatment at the Institute). As to the stage of the new breast cancer cases in Slovenia (Figure 5), the percentage of metastatic disease is as it was anticipated. The percentages of localized and regional diseases may well be effected upon by an early detection of the disease. In patients with localized breast cancer (Figure 6), the percentage of surgical treatment share corresponds to what was expected. Less than one tenth of patients exposed to hormonal treatment comprises elderly patients. It is not surprising that the patients with regional progress of the disease are in the first place exposed to surgical treatment as basic therapy, or to hormonal treatment only; surprising is the fact that one tenth of patients is subjected to surgical treatment only. The treatment of patients with metastatic disease varies from patient to patient and depends upon the progress of the disease and upon the patient's performance status.

Soft tissue sarcomas are a rare cancer (only 1% of all cancers - Figure 7). A more detailed analysis is given in our Report on Cancer Incidence in Slovenia 1992. A high percentage of the soft tissue sarcomas is curable if detected early enough and appropriately treated. The most common way of soft tissue sarcoma treatment in adults is radical surgery, the sufficiency of which could only be confirmed by pathologists. Radio- and chemotherapy are additional treatment modalities. It has been recently observed that most of the doctors learn about the proper diagnosis only after the operation (34 patients out of 44), when it is too late to make an effec-

tive primary treatment plan. It is therefore advisable that any patient, should there be the least suspicion of soft tissue sarcoma, is sent immediately to the Institute of Oncology, Ljubljana, where all possible cancer treatment modalities are available and also appropriate pathomorphological diagnostics, which may be made prior to surgery as well as during and after it.

In 1993, compulsory registration of all cervical intraepithelial displasias classified as CIN III was introduced. Thus, in the present report for the second time the number of all CIN III cases reported is given in Tables 3-7. CIN III include also the types classified as intraepithelial cancers, previously listed in these tables under the code 2340. The number of all CIN III cases is twofold that of the cases reported as intraepithelial carcinomas. Therefore, any comparison with the data for the period 1961-92 is not possible.

The reliability of data for 1994, 4% of cases registered only from death certificates (Table 3), was 1% worse than in the past ten years. It is believed that the 3% of cancer patients registered in Slovenia only on the basis of death certificates is a realistic percentage of cancers that failed to be diagnosed and/or treated at hospital owing to the patients' advanced age or stage of the disease; the additional 1% could be attributed to a less efficient collaboration with some regional health centers.

The number of childhood cancer cases presented in table 4 was within the limits of values expected.

Incidence per 100 000 population is presented in Table 5. It has been calculated from the number of inhabitants of Slovenia on June 30, 1994 (Table 1). This is the crude incidence rate. In age standardized incidence rates (Figure 2), the influence of the differences in population age structure in the period of observation has been excluded (the aging of the Slovene population in the period 1950-94). They were calculated according to the Day's method for cumulative incidence calculation from 0 to 74 years of age per 100 population (*Cancer Incidence in Five Continents*, Vol. 5, 1987: 787-789). Cumulative incidence represents five times the sum of the age-specific incidence rates in 5-year age groups. Day interprets it as a directly standardized incidence rate with the same population size in each age group or as an approximation to the cumulated risk. It represents a newborn's risk of developing cancer by his 75th year of age. Thus, the cumulative incidence of 5.2 / 100 for breast cancer in females means that 5.2 % of female newborns are expected to develop breast cancer till their 75th year of age. The cumulative incidence figures differ from those of crude incidence per 100 000 population. The comparison of crude and age-standardized incidence curves (Figure 2) indicates that the increasing crude cancer incidence rate in females can be attributed to the aging of population, whereas in males obviously additional risk factors should be considered as well.

When using and interpreting the data in Table 6, different age structure in regional health centre districts and administrative health-regions should be taken into account. The table has been originally designed to present the number of newly diagnosed cancers, as needed for planning of facilities and funding of health care in the regions and health centre districts. Therefore, in this table the data on all new CIN III cases by health centres are presented. When used for other purposes, particularly for the search of possible risk factors of different cancers, the data require previous age standardization. The influence of different age structures on the incidence rates is evident also from maps drawn in the mentioned *Atlas of Cancer Incidence in Slovenia, 1978-1987*, presenting crude as well as cumulative incidence rates for all and most frequent cancers by communes.

Primary cancer sites were coded according to the 8th revised edition of *International Classification of Diseases (ICD-8)*. Thus, the cancer cases with unknown primary site were coded 196-199; e.g. such cases with lymph node metastases were classified under code 196. The 8th revision had been used in order to enable a comparison of data in the present report with those reported from the year 1970 on.

The number of all microscopically, i.e. histologically and/or cytologically confirmed new cancer cases is presented in Table 7. In Table 8 histologically and cytologically verified cases are presented separately. The cytologically verified cases are given in brackets. The sum of histologically and cytologically verified cases in Table 8 equals the number of microscopically verified cases in Table 7.

Histologic types in Table 8 are coded according to the 2nd revision of ICD-O (WHO, 1991). For the purpose of this report, some rare cancers have been grouped together. This, however, does not exclude individual processing by any ICD-O code, e.g. outprint of rare histologic types such as Burkitt lymphomas. The table also provides information on primary sites of extranodal malignant lymphomas and their number, as the extranodal are strictly categorized among primary sites by corresponding codes.

In Table 9, age distribution of extranodal and nodal sites of non-Hodgkin malignant lymphomas is presented. Owing to a small number of extranodal sites only the absolute numbers are given.

In table 10 university and general hospitals of first admission of cancer patients are cited.

Table 11 shows stages of the disease at diagnosis. Solid tumor stage is not classified according to TNM classification system, but by cancer registries regulations according to which all investigation methods incl. surgery are considered in stage determination. In the case that the patient was not treated previously, autopsy report is considered as well. Malignant lymphomas are classified according to Ann-Arbor system. As for the histologic type, outprint of data by TNM classification is possible as well, provided that the data were correctly coded in patient records as well as on notification forms.

The data presented in tables refer only to patients, residents in Slovenia, irrespective of their place of treatment.

ACKNOWLEDGMENT

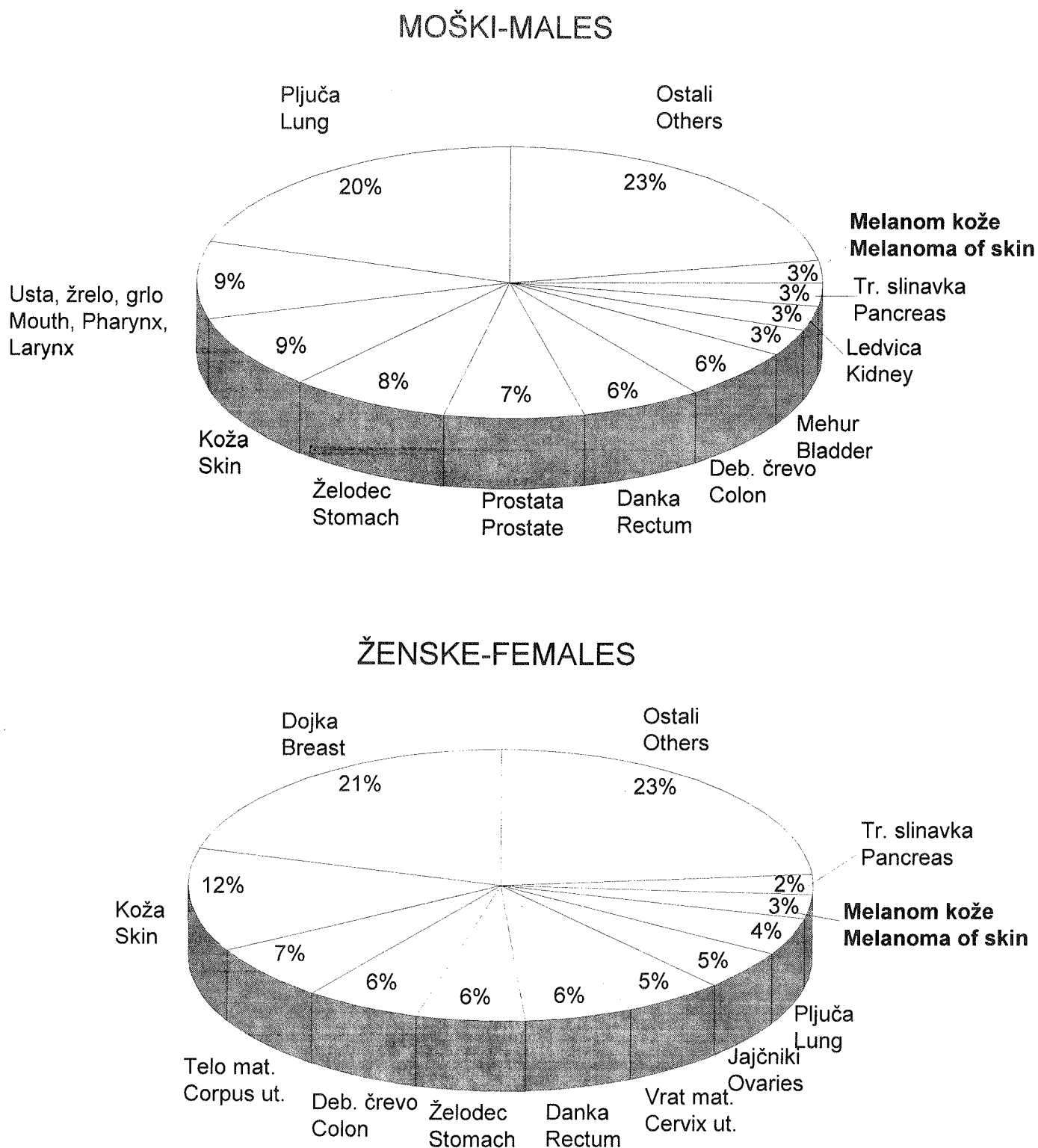
We thank to the physicians, nurses and administrative staff who have provided the data on new cancer patients and their further history. We owe special thanks to the coworkers of the Hospital Registry of the Institute of Oncology, Mrs. Ana Dotzauer, Maruška Ferjančič, and Nada Jamšek, whose accurate evidence keeping, registration and coding of data from patients records have contributed more than a half of the information presented in this report.

Editors

Ljubljana, January 15, 1997

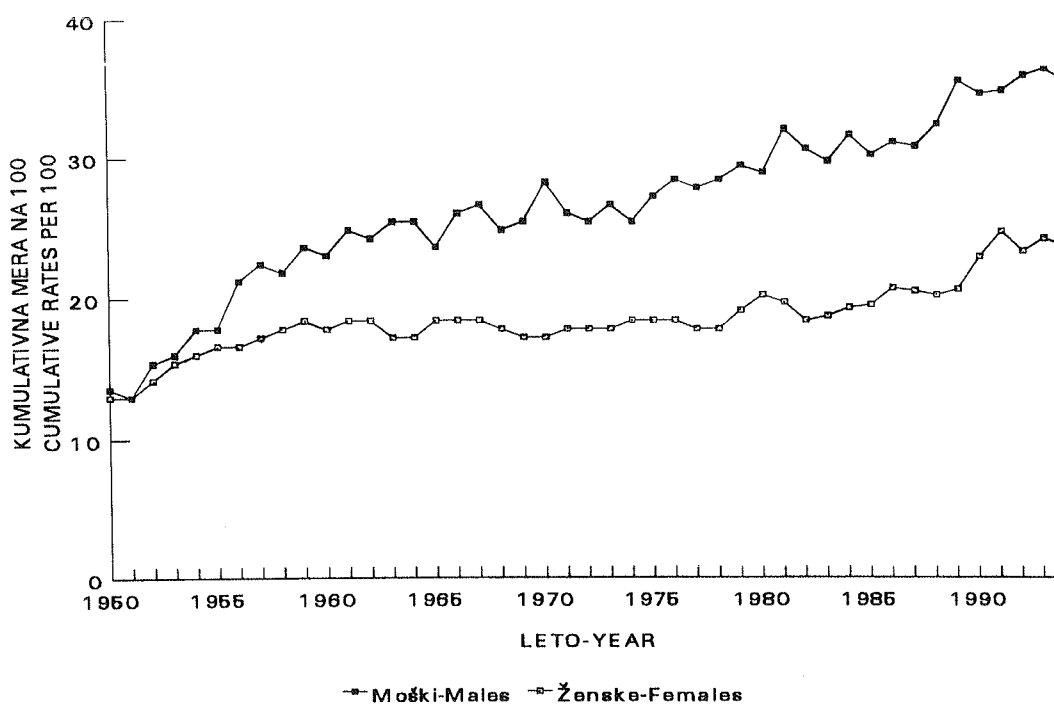
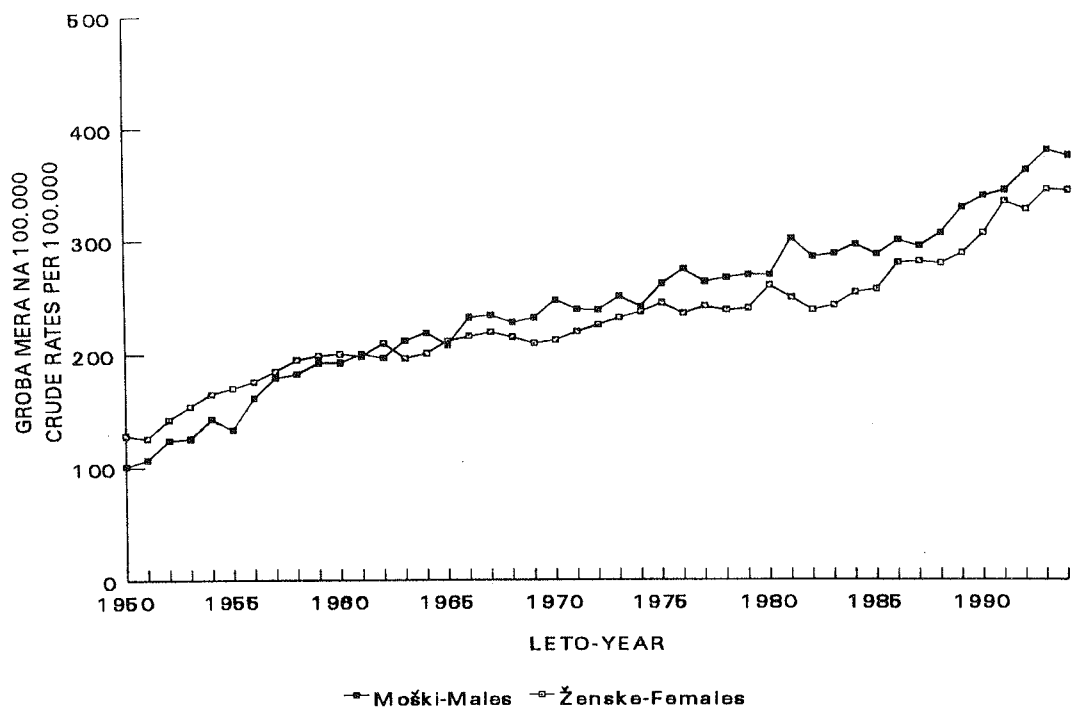
Slika 1. Najpogostejše lokacije raka po spolu - Slovenija 1994

Figure 1. The leading cancer sites by sex - Slovenia 1994



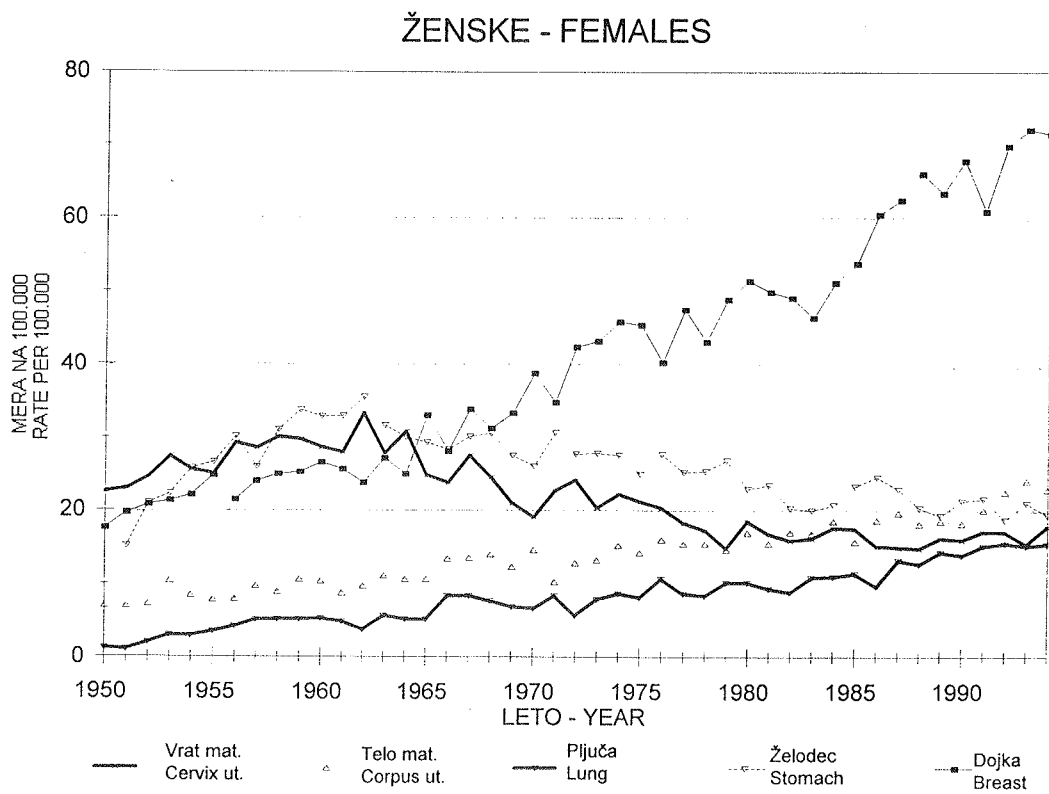
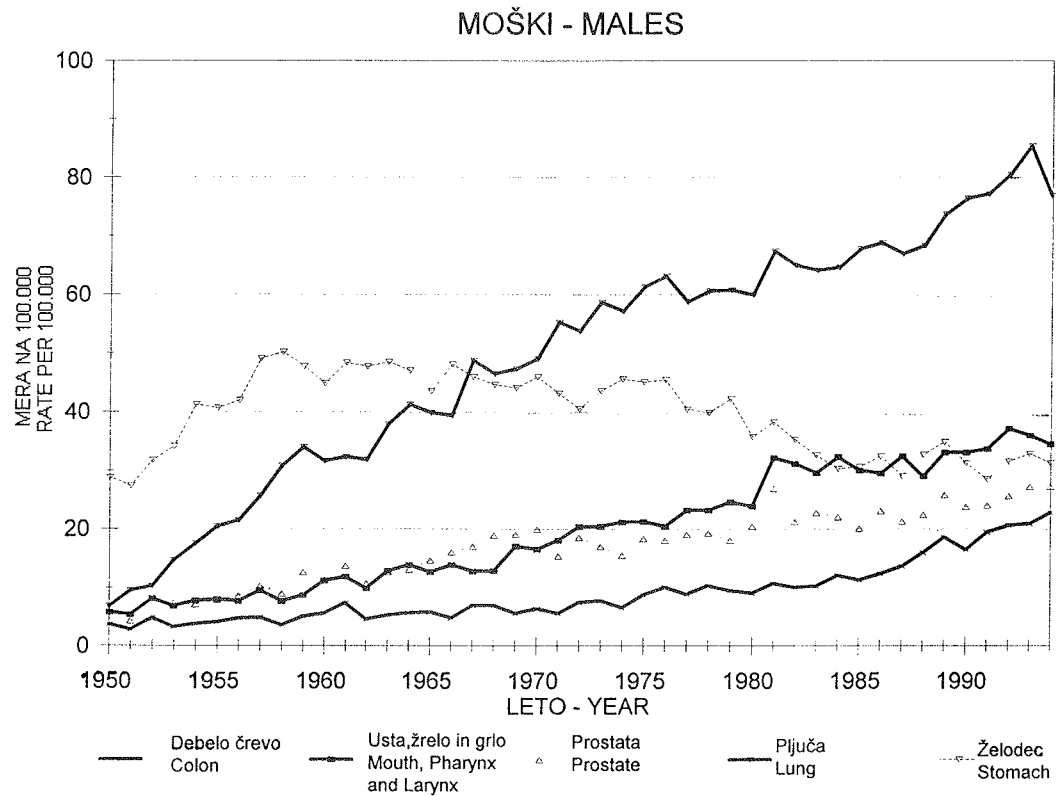
Slika 2. Groba in kumulativna letna incidenca raka vseh lokacij po spolu - Slovenija 1950-1994

Figure 2. Crude and cumulative annual cancer incidence; all sites by sex - Slovenia 1950-1994



Slika 3. Groba letna incidenca izbranih rakov po spolu - Slovenija 1950-1994

Figure 3. Crude annual cancer incidence by selected primary sites and sex - Slovenia 1950-1994



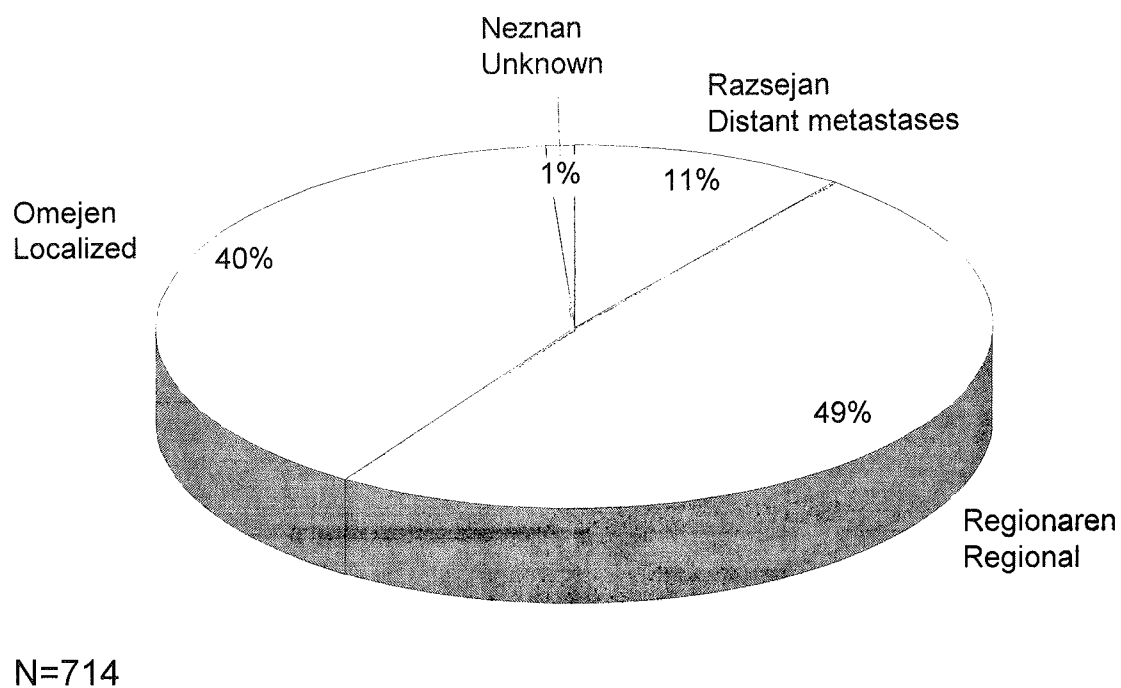
Slika 4. Nove bolnice z rakom dojk po bolnišnicah diagnoze ter pričetka in nadaljevanja prvega zdravljenja - Slovenija 1994

Figure 4. New breast cancer patients by hospitals of diagnosis and first treatment - Slovenia 1994

<i>Bolnišnica</i>	<i>Ugotovitev</i>	<i>Prvo zdravljenje</i>			
<i>Hospital</i>	<i>Diagnosed</i>	<i>pričetek</i>	<i>nadaljevanje na OI</i>		
	<i>Število/Number</i>	<i>First started</i>	<i>treatment (%)</i>	<i>continued at IO</i>	<i>(%)</i>
Skupaj Total	714	680	(100)	577	(83)
Onkološki inštitut, Ljubljana Institute of Oncology, Ljubljana	373	417	(61)	417	(100)
Klinični center, Ljubljana University Medical Center, Ljubljana	15	4		2	
Splošne in specialistične bolnišnice General and special hospitals	315	250	(37)	152	(61)
Splošna bolnišnica Maribor	117	111		62	(56)
Splošna bolnišnica Celje	64	56		31	(55)
Splošna bolnišnica Nova Gorica	45	43		25	(58)
Splošna bolnišnica Novo mesto	35	24		23	(96)
Splošna bolnišnica Izola	13	-			
Splošna bolnišnica Slovenj Gradec	12	8		3	
Bolnišnica za ženske bol. in porod. Postojna	8	8		6	
Splošna bolnišnica Jesenice	7	-			
Splošna bolnišnica Ptuj	6	1		1	
Splošna bolnišnica Murska Sobota	6	1		1	
Bolnišnica Ivana Regenta Sežana	1	-			
Splošna bolnišnica Brežice	1	-			
Drugi zdravstveni zavodi Other health institutions	11	9		8	

Slika 5. Nove bolnice z rakom dojk po stadijih ob diagnozi - Slovenija 1994

Figure 5. New breast cancer patients by stage at diagnosis - Slovenia 1994

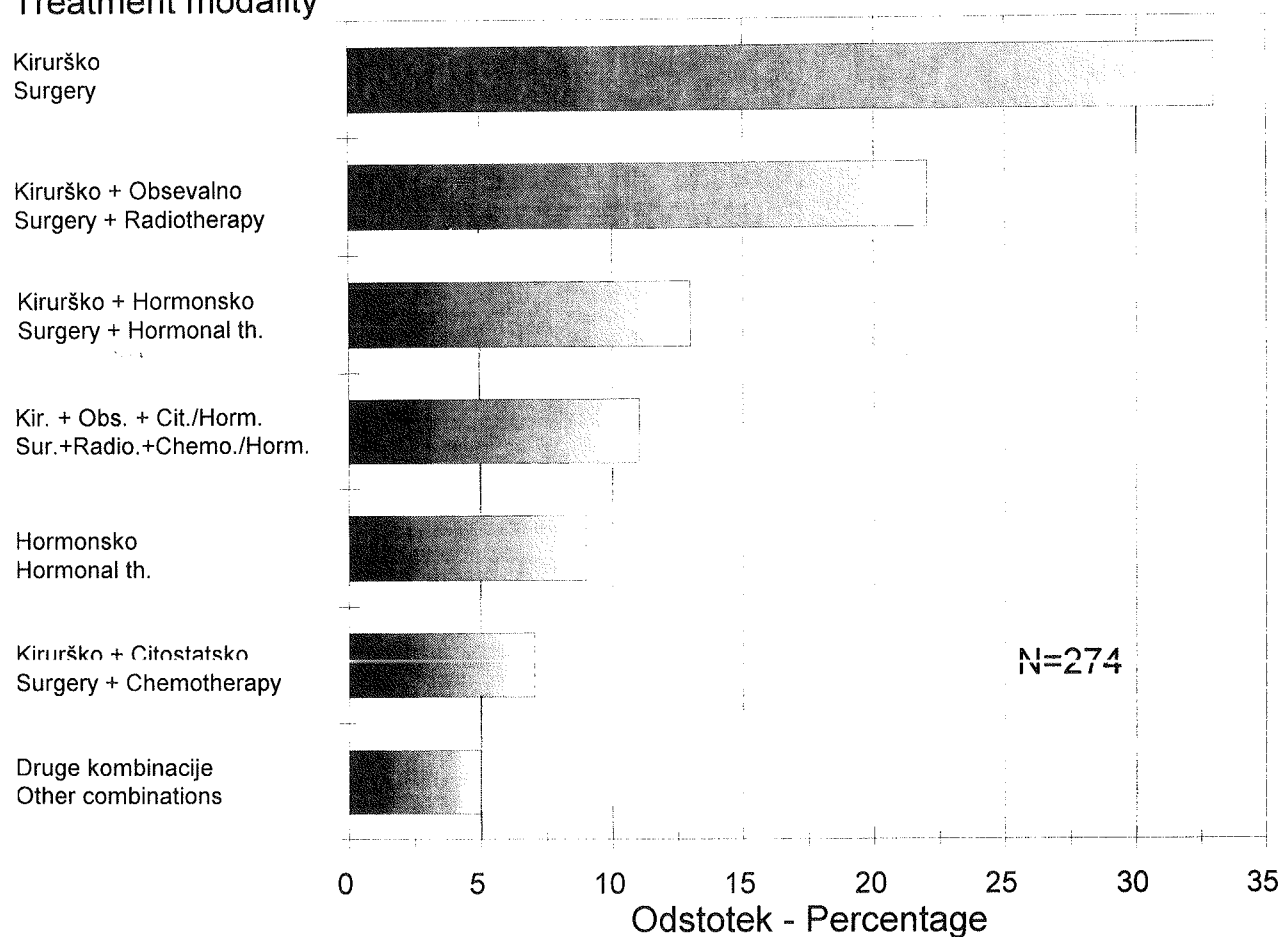


Slika 6. Način prvega zdravljenja bolnic z rakom dojk po stadiju - Slovenija 1994.
A - ob lokalno omejenem, B - ob regionarno razširjenem, C - ob razsejanem raku

Figure 6. First treatment modality of breast cancer patients by stage - Slovenia 1994.
A - localized cancer, B - regional metastases, C - distant metastases

A

Način zdravljenja
Treatment modality

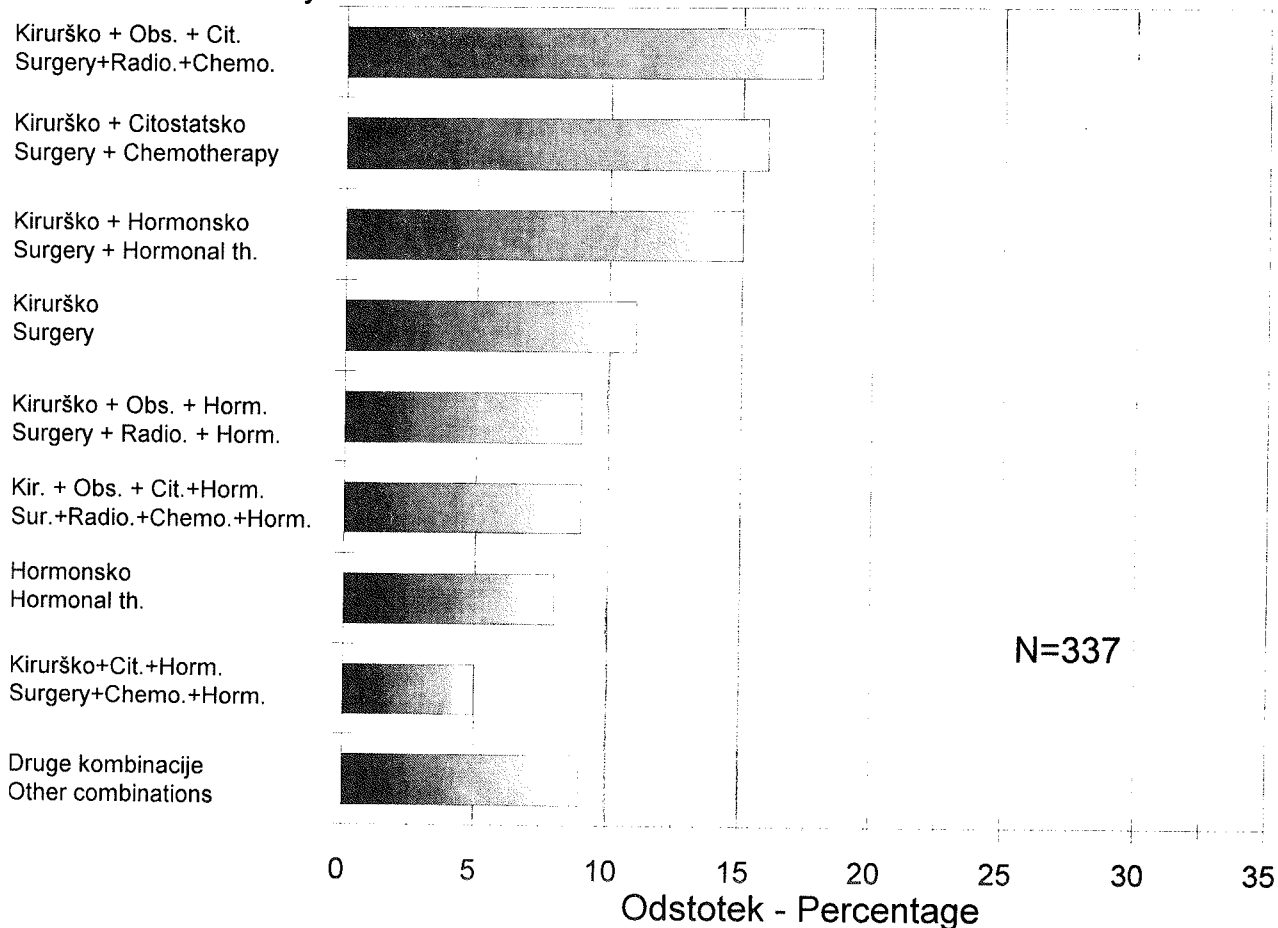


Slika 6. Način prvega zdravljenja bolnic z rakom dojk po stadiju - Slovenija 1994.
 A - ob lokalno omejenem, B - ob regionarno razširjenem, C - ob razsejanem raku

Figure 6. First treatment modality of breast cancer patients by stage - Slovenia 1994.
 A - localized cancer, B - regional metastases, C - distant metastases

B

Način zdravljenja
Treatment modality

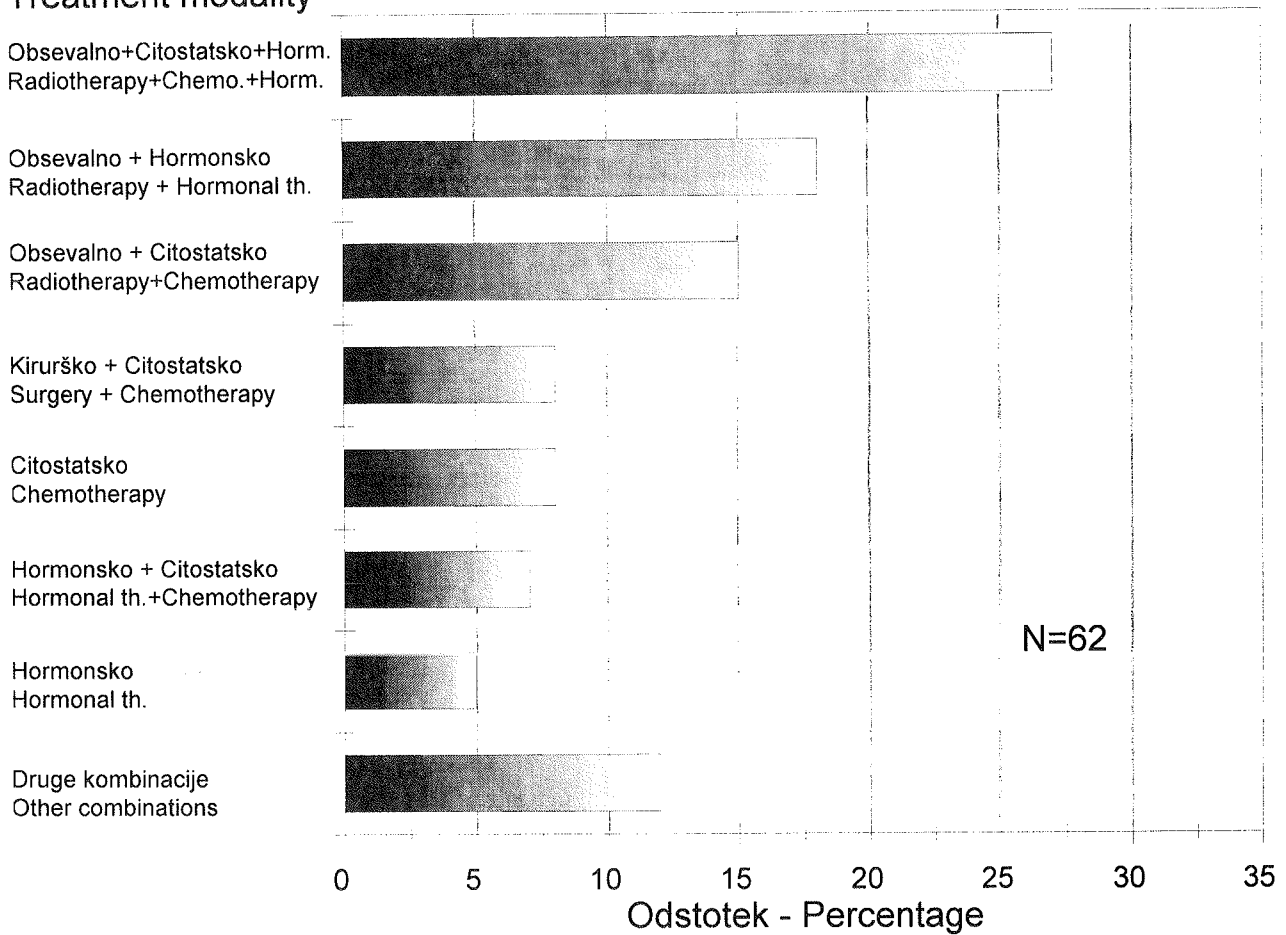


Slika 6. Način prvega zdravljenja bolnic z rakom dojk po stadiju - Slovenija 1994.
A - ob lokalno omejenem, B - ob regionarno razširjenem, C - ob razsejanem raku

Figure 6. First treatment modality of breast cancer patients by stage - Slovenia 1994.
A - localized cancer, B - regional metastases, C - distant metastases

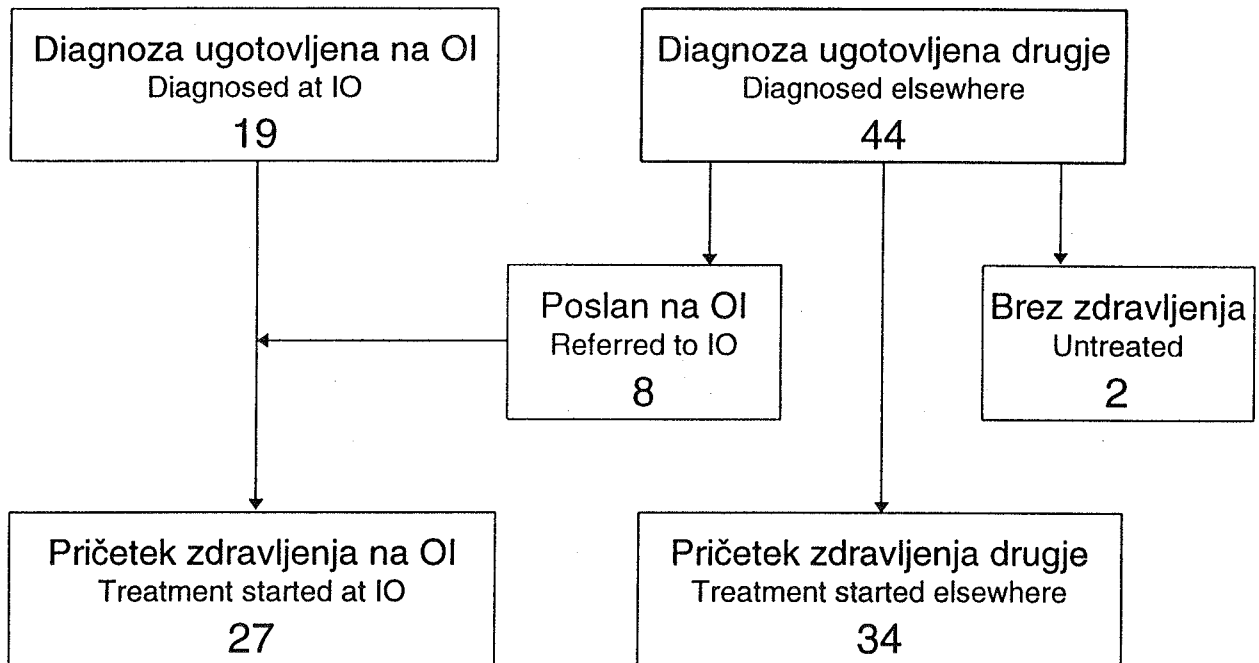
C

Način zdravljenja
Treatment modality



Slika 7. Novi bolniki s sarkomi mehkih tkiv po bolnišnicah diagnoze ter pričetka in nadaljevanja prvega zdravljenja - Slovenija 1994

Figure 7. New patients with soft tissues sarcoma by hospitals of diagnosis and first treatment - Slovenia 1994



Mesec dni po izdaji velike knjige o preživetju bolnikov z rakom v Evropi je na podlagi podatkov Registra raka za Slovenijo izšla tudi knjiga PREŽIVETJE BOLNIKOV Z RAKOM V SLOVENIJI (avtorji V. Pompe-Kirn, B. Zakotnik, N. Volk, T. Benulič in J. Škrk). Z barvnimi slikami in tabelami je predstavljeno pričakovano, opazovano in relativno preživetje bolnikov z rakom v letih 1963-90. Pri pisanju spremnega besedila je sodelovalo 18 klinikov-onkologov, ki že vrsto let zdravijo bolnike z rakom v Sloveniji. Knjiga je izšla 5. junija 1995.

Knjiga je na voljo po subvencionirani ceni 3000 SIT. Kupite jo lahko v Registru raka za Slovenijo na Onkološkem inštitutu v Ljubljani, Zaloška 2 (III. nadstropje stavbe C), če pa izpolnite in nam pošljete spodnjo naročilnico, vam knjigo pošljemo s plačilom po povzetju.

*Registru raka za Slovenijo
Onkološki inštitut
1000 Ljubljana
Zaloška c. 2*

NAROČILNICA

Prosim, da na naslov

.....
.....
.....
.....

pošljete po povzetju
..... izvod(ov) knjige

PREŽIVETJE BOLNIKOV Z RAKOM V SLOVENIJI, 1963-1990

V....., dne.....

Podpis (in žig)

Tabela 1. Prebivalstvo Slovenije po starosti in spolu na dan 30. 6. 1994***Table 1. Population of Slovenia by age and sex on June 30th, 1994***

<i>Starost</i> <i>Age</i>	<i>Skupaj</i> <i>Total</i>	<i>Moški</i> <i>Males</i>	<i>Ženske</i> <i>Females</i>
0 - 4	104 290	53 525	50 765
5 - 9	126 259	64 622	61 637
10 - 14	143 077	73 368	69 709
15 - 19	150 443	77 203	73 240
20 - 24	141 774	72 151	69 623
25 - 29	150 162	74 501	75 661
30 - 34	153 228	76 673	76 555
35 - 39	159 755	80 980	78 775
40 - 44	160 954	82 711	78 243
45 - 49	122 858	62 532	60 326
50 - 54	120 990	60 326	60 664
55 - 59	110 516	53 644	56 872
60 - 64	107 888	48 901	58 987
65 - 69	88 952	35 178	53 774
70 - 74	66 671	22 855	43 816
75 - 79	30 035	10 058	19 977
80 in več 80 and over	50 998	14 885	36 113
Vse starosti Total	1 988 850	964 113	1 024 737

* Vir: *Statistične informacije*, št. 253/1994, Zavod R Slovenije za statistiko, Ljubljana, 5. oktober 1994
 Source: *Statistične informacije*, No. 253/1994, Zavod R Slovenije za statistiko, Ljubljana, October 5, 1994

Tabela 2. Prebivalstvo Slovenije po zdravstvenih regijah po spolu na dan 30. junija 1994*

Table 2. Population of Slovenia by health regions by sex on June 30th, 1994*

<i>Zdravstvena regija</i> <i>Health region</i>	<i>Skupaj</i> <i>Total</i>	<i>Moški</i> <i>Males</i>	<i>Ženske</i> <i>Females</i>
Celje	241 329	117 305	124 024
Gorica	102 745	50 071	52 674
Koper	135 558	66 285	69 273
Kranj	194 681	94 210	100 471
Ljubljana	592 191	283 584	308 607
Ljubljanske občine	327 589	154 522	173 067
Maribor	324 968	157 708	167 260
Mariborske občine	186 392	89 671	96 721
Murska Sobota	130 119	63 310	66 809
Novo mesto	133 372	65 395	67 977
Ravne	133 887	66 245	67 642
R Slovenija skupaj Total	1 988 850	964 113	1 024 737

* Vir: *Statistične informacije*, št. 253/1994, Zavod R Slovenije za statistiko, Ljubljana, 5. oktober 1994
 Source: *Statistične informacije*, No. 253/1994, Zavod R Slovenije za statistiko, Ljubljana, October 5, 1994

Tabela 3. Število novih primerov raka ter število in odstotek primerov, registriranih samo iz zdravniških poročil o vzroku smrti, po lokaciji in spolu - Slovenija 1994

Table 3. Total number of new cancer cases and number and percentage of cases registered from death certificates only, by site and sex - Slovenia 1994

Šifra MKB*	Primarna lokacija	Spol	Število novih primerov	Registrirani samo iz zdravniških poročil o vzroku smrti Število	Odstotek**
ICD* No.	Primary site	Sex	Number of new cases	Registered from death certificates only Number	Per cent**
140	Vse lokacije	Skupaj	7 155	262	4
-	All sites	Total			
209		Moški	3 625	142	4
		Male			
		Ženske	3 530	120	3
		Female			
140	Ustnica	M	22	-	-
	Lip	Ž	3	1	-
141	Jezik	M	46	-	-
	Tongue	Ž	5	-	-
142	Slinavke	M	4	-	-
	Salivary glands	Ž	11	-	-
143	Dlesni	M	4	-	-
	Gum	Ž	2	-	-
144	Ustno dno	M	36	-	-
	Floor of mouth	Ž	3	-	-
145	Usta, drugo	M	18	-	-
	Mouth, other parts	Ž	3	-	-
146	Orofarinks	M	82	-	-
	Oropharynx	Ž	16	1	6
147	Epifarinks	M	5	-	-
	Epipharynx	Ž	4	-	-
148	Hipofarinks	M	46	-	-
	Hypopharynx	Ž	-	-	-
149	Žrelo, neoznačeno	M	1	-	-
	Pharynx, not specified	Ž	1	-	-
150	Požiralnik	M	84	5	6
	Esophagus	Ž	12	2	-
151	Želodec	M	302	24	8
	Stomach	Ž	199	17	9
152	Tanko črevo	M	1	-	-
	Small intestine	Ž	7	-	-

cont. ↓

Tabela 3. Nadaljevanje - continued

Šifra MKB*	Primarna lokacija	Spol	Število novih primerov	Registrirani samo iz zdravniških poročil o vzroku smrti	
ICD* No.	Primary site	Sex	Number of new cases	Število	Odstotek**
				Registered from death certificates only	Per cent**
				Number	
153	Debelo črevo	M	220	10	5
	Colon	Ž	211	8	4
154	Rektum	M	229	5	2
	Rectum, anus	Ž	197	8	4
155	Jetra	M	45	-	-
	Liver	Ž	27	-	-
156	Žolčnik, žolčni vodi	M	36	3	8
	Gall bladder, bile ducts	Ž	65	8	12
157	Trebušna slinavka	M	99	6	6
	Pancreas	Ž	83	8	10
158	Retro-, peritonej	M	3	-	-
	Retro-, peritoneum	Ž	3	-	-
159	Prebavila, drugo	M	1	1	-
	Digestive organs, other	Ž	3	2	-
160	Nos, obnosne votline, drugo	M	14	-	-
	Nose, sinuses, etc.	Ž	9	-	-
161	Grlo	M	99	1	1
	Larynx	Ž	10	-	-
162	Sapnik, sapnica, pljuča	M	741	28	4
	Trachea, bronchus, lung	Ž	158	4	3
163	Plevra, mediastin., drugo	M	14	1	-
	Pleura, mediastinum, etc.	Ž	4	-	-
170	Kosti	M	9	-	-
	Bone	Ž	7	-	-
171	Mehka tkiva	M	11	-	-
	Soft tissues	Ž	19	-	-
172	Koža, maligni melanom	M	95	-	-
	Skin, malignant melanoma	Ž	100	-	-
173	Koža, drugi malignomi	M	323	-	-
	Skin, other malignancies	Ž	433	1	-
174	Dojka	M	13	-	-
	Breast	Ž	733	19	3
180	Maternica, vrat	Ž	182	-	-
	Uterus, cervix				
181	Horioepiteliom	Ž	1	-	-
	Chorioepithelioma				

cont. ↓

Tabela 3. Nadaljevanje - continued

Šifra MKB*	Primarna lokacija	Spol	Število novih primerov	Registrirani samo iz zdrav- niških poročil o vzroku smrti Število	Odstotek**
ICD* No.	Primary site	Sex	Number of new cases	Registered from death certificates only Number	Per cent**
182	Maternica, telo, drugo Uterus, corpus, etc.	Ž	235	2	1
183	Jajčnik, jajcevod, drugo Ovary, Fallopian tube, etc.	Ž	167	5	3
184	Nožnica, vulva, drugo Vagina, vulva, etc.	Ž	35	-	-
185	Prostata Prostate	M	261	23	9
186	Modo Testis	M	64	-	-
187	Penis, obmodek, drugo Penis, epididymis, etc.	M	6	1	
188	Mehur Bladder	M Ž	116 49	6 4	5 8
189	Ledvica, sečevod, drugo Kidney, ureter, etc.	M Ž	105 63	5 2	5 3
190	Oko Eye	M Ž	10 4	- -	
191	Možgani Brain	M Ž	45 33	- 1	- 3
192	Živčevje, drugo Nervous system, other	M Ž	6 6	- -	
193	Ščitnica Thyroid	M Ž	15 53	1 -	7 -
194	Endokrine žleze, druge Endocrine glands, other	M Ž	4 6	- -	
195	Slabo opredeljena lokaliz. Ill-defined site	M Ž	9 27	2 6	
196	Metastaze v bezgavkah Lymph node metastases	M Ž	20 17	- -	- -
197	Met. v dihalih, prebavilih Respiratory, digestive tract met.	M Ž	42 65	9 10	21 15
198	Metastaze, drugje Metastases, other	M Ž	53 15	- -	- -
199	Malignomi, neopredeljeni Malignancies, unspecified	M Ž	59 44	9 10	15 23

cont. ↓

Tabela 3. Nadaljevanje - continued

Šifra MKB*	Primarna lokacija	Spol	Število novih primerov	Registrirani samo iz zdrav- niških poročil o vzroku smrti	
ICD* No.	Primary site	Sex	Number of new cases	Število Registered from death certificates only Number	Odstotek** Per cent**
200	Ne-Hodgkinovi limfomi	M	58	-	-
202	Non-Hodgkin's lymphomas	Ž	63	-	-
201	Hodgkinov limfom Hodgkin's disease	M	18	1	6
		Ž	21	-	-
203	Plazmacitom Plasmacytoma	M	31	-	-
		Ž	35	1	3
204.0	Levkemija, limfat., akutna Leukaemia, lymphatic acute	M	14	-	-
		Ž	14	-	-
204.1	Levkemija, limfat., kronična Leukaemia, lymphatic chronic	M	45	1	-
		Ž	30	-	-
205	Levkemija, mieloična Leukaemia, myeloid	M	29	-	-
		Ž	22	-	-
206	Levkemija, monocitna Leukaemia, monocytic	M	1	-	-
		Ž	2	-	-
207	Levkemije, druge Leukaemias, other	M	3	-	-
		Ž	3	-	-
208	Policitemija, prava Polycythemia vera	M	5	-	-
		Ž	7	-	-
209	Mielofibroza Myelofibrosis	M	3	-	-
		Ž	3	-	-
Zgoraj neupoštevani					
Not included above					
-	Dojka, in situ Breast, in situ	Ž	15	-	-
-	Maternica, vrat, CIN III*** Uterus, cervix, CIN III	Ž	534	-	-
2250	Možgani, benigni tumor Brain, benign tumor	M	15	-	-
		Ž	40	-	-
2381	Možgani, neopredeljeno Brain, unspecified	M	9	1	-
		Ž	13	1	-

* Mednarodna klasifikacija bolezni, osma revizija, 1965
International Classification of Diseases, Eighth Revision, 1965

** Odstotki niso računani pri številih pod 15
Percentages are not calculated for less than 15 cases

*** Vse spremembe CIN III, vključno šifra 2340 (in situ)
All CIN III changes including 2340 (in situ)

Tabela 4. Število novih primerov raka po lokaciji, spolu in starosti - Slovenija 1994

Table 4. Number of new cancer cases by site, sex, and age - Slovenia 1994

Šifra MKB	Lokacija Site	Spol Sex	Vse starosti All ages	Starost Age																	
				0-	5-	10-	15-	20-	25-	30-	35-	40-	45-	50-	55-	60-	65-	70-	75-	80+	?
140	Vse lokacije	Skupaj	7 155	25	9	11	19	27	53	105	176	311	388	553	756	1095	1166	940	572	949	-
209	All sites	Total																			
		Moški	3 625	15	6	4	10	12	23	47	70	128	185	299	434	632	656	444	264	396	-
		Male																			
		Ženske	3 530	10	3	7	9	15	30	58	106	183	203	254	322	463	510	496	308	553	-
		Female																			
140	Ustnica	M	22	-	-	-	-	-	-	1	-	1	1	5	1	2	4	2	-	5	-
	Lip	Ž	3	-	-	-	-	-	-	-	-	-	-	-	-	-	1	-	-	2	-
141	Jezik	M	46	-	-	-	-	-	-	1	3	5	2	6	11	11	3	4	-	-	-
	Tongue	Ž	5	-	-	-	-	-	-	-	-	1	-	1	-	-	1	1	1	-	-
142	Slinavke	M	4	-	1	-	-	-	-	-	-	-	-	-	-	-	-	1	1	1	-
	Salivary glands	Ž	11	-	-	-	-	-	-	-	-	1	-	1	-	1	-	3	1	4	-
143	Dlesni	M	4	-	-	-	-	-	-	-	-	-	-	-	1	3	-	-	-	-	-
	Gum	Ž	2	-	-	-	-	-	-	-	-	-	-	-	-	-	-	1	-	1	-
144	Ustno dno	M	36	-	-	-	-	-	-	1	2	2	2	9	3	8	6	2	-	1	-
	Floor of mouth	Ž	3	-	-	-	-	-	-	-	1	-	-	1	-	1	-	-	-	-	-
145	Usta, drugo	M	18	-	-	-	-	-	-	-	-	3	1	2	3	5	3	1	-	-	-
	Mouth, other parts	Ž	3	-	-	-	-	-	-	-	-	-	1	-	-	2	-	-	-	-	-
146	Orofarinks	M	82	-	-	-	-	-	-	-	1	5	14	9	12	17	14	6	2	2	-
	Oropharynx	Ž	16	-	-	-	-	-	-	-	-	1	-	2	1	3	4	-	1	4	-
147	Epifarinks	M	5	-	-	-	-	-	-	-	-	-	2	-	-	1	1	-	1	-	-
	Epipharynx	Ž	4	-	-	-	-	-	-	-	1	-	-	-	1	-	1	-	-	1	-
148	Hipofarinks	M	46	-	-	-	-	-	-	1	6	6	8	9	7	4	3	1	1	-	-
	Hypopharynx	Ž	-	-	-	-	-	-	-	-	-	-	-	-	-	-	-	-	-	-	-
149	Žrelo, neoznačeno	M	1	-	-	-	-	-	-	-	-	-	-	-	-	-	1	-	-	-	-
	Pharynx, not specified	Ž	1	-	-	-	-	-	-	-	-	-	-	-	-	-	1	-	-	-	-
150	Požiralnik	M	84	-	-	-	-	-	-	-	-	-	4	7	14	30	16	8	2	3	-
	Esophagus	Ž	12	-	-	-	-	-	-	-	-	-	-	-	-	1	2	3	2	4	-
151	Želodec	M	302	-	-	-	1	-	2	2	10	19	24	21	52	54	38	28	51	-	
	Stomach	Ž	199	-	-	-	-	1	1	1	6	6	15	10	21	31	24	29	54	-	
152	Tanko črevo	M	1	-	-	1	-	-	-	-	-	-	-	-	-	-	-	-	-	-	
	Small intestine	Ž	7	-	-	-	-	-	-	1	-	1	2	-	-	1	1	-	1	-	
153	Debelo črevo	M	220	-	-	-	1	-	-	3	6	11	15	26	42	53	25	14	24	-	
	Colon	Ž	211	-	-	-	-	-	-	7	8	7	11	18	26	37	36	18	43	-	
154	Rektum	M	229	-	-	-	-	-	1	4	4	7	18	29	45	37	26	30	28	-	
	Rectum, anus	Ž	197	-	-	-	1	1	-	1	7	7	10	9	25	38	42	22	34	-	

cont. ↓

Tabela 4. Nadaljevanje - continued

Šifra MKB	Lokacija Site	Spol Sex	Vse starosti All ages	Starost Age																	
				0-	5-	10-	15-	20-	25-	30-	35-	40-	45-	50-	55-	60-	65-	70-	75-	80+	?
155	Jetra Liver	M	45	-	-	-	-	-	-	-	2	5	5	3	7	8	3	6	4	2	-
		Ž	27	1	-	-	-	-	-	-	3	-	1	1	1	2	7	7	1	3	-
156	Žolčnik, žolčni vodi Gall bladder, bile ducts	M	36	-	-	-	-	-	-	-	-	-	-	2	2	3	9	6	7	7	-
		Ž	65	-	-	-	-	-	-	-	-	-	3	3	4	4	10	17	9	15	-
157	Trebušna slinavka Pancreas	M	99	-	-	-	-	1	-	-	1	3	6	5	10	17	20	15	9	12	-
		Ž	83	-	-	-	-	-	-	-	-	1	1	3	2	7	14	16	15	24	-
158	Retro-, peritonej Retro-, peritoneum	M	3	-	-	-	-	1	-	-	-	-	-	1	-	-	-	1	-	-	-
		Ž	3	-	-	-	-	-	-	-	-	-	-	1	1	-	-	-	-	-	1
159	Prebavila, drugo Digestive organs, other	M	1	-	-	-	-	-	-	-	-	-	-	-	-	-	-	-	-	1	-
		Ž	3	-	-	-	-	-	-	-	-	-	-	-	-	-	-	1	-	-	2
160	Nos, obnosne votl., drugo Nose, sinuses, etc.	M	14	-	-	-	-	1	-	-	1	-	-	2	3	2	-	2	1	2	-
		Ž	9	-	-	-	-	-	-	-	1	-	-	-	1	1	1	-	1	4	-
161	Grlo Larynx	M	99	-	-	-	1	-	-	1	2	6	8	15	17	21	18	5	1	4	-
		Ž	10	-	-	-	-	-	-	1	-	1	1	1	1	2	1	1	-	1	-
162	Sapnik, sapnica, pljuča Trachea, bronchus, lung	M	741	-	-	-	-	-	1	6	13	33	72	122	165	158	84	41	46	-	
		Ž	158	-	-	-	-	-	3	3	7	6	11	14	26	29	25	17	17	-	
163	Plevra, mediastin., drugo Pleura, mediastinum, etc.	M	14	-	-	-	-	1	1	-	1	2	1	-	3	1	1	1	1	-	
		Ž	4	-	-	-	-	-	1	-	-	-	-	-	1	1	-	-	1	-	
170	Kosti Bone	M	9	-	-	-	3	-	-	-	-	1	1	2	1	-	-	-	1	-	
		Ž	7	-	-	1	-	-	2	-	-	-	-	2	-	2	-	-	-	-	
171	Mehka tkiva Soft tissues	M	11	-	1	-	-	1	-	1	-	1	-	1	-	1	1	2	1	1	-
		Ž	19	1	-	-	2	1	1	1	2	1	1	-	2	3	1	2	1	-	
172	Koža, maligni melanom Skin, malignant melanoma	M	95	-	-	-	-	-	1	5	5	10	6	10	8	15	10	12	6	7	-
		Ž	100	-	-	-	-	2	6	8	3	10	14	6	10	7	7	13	3	11	-
173	Koža, drugi malignomi Skin, other malignancies	M	323	-	-	-	-	-	2	3	3	11	13	25	31	39	57	54	33	52	-
		Ž	433	-	-	-	-	-	1	1	6	13	12	20	27	51	58	81	62	101	-
174	Dojka Breast	M	13	-	-	-	-	-	-	-	-	-	1	1	2	-	7	-	1	1	-
		Ž	733	-	-	-	-	-	2	12	29	61	66	84	80	101	109	63	55	71	-
180	Maternica, vrat Uterus, cervix	Ž	182	-	-	-	-	-	6	18	34	22	20	8	25	12	7	15	5	10	-
181	Horioepiteliom Chorioepithelioma	Ž	1	-	-	-	-	-	-	1	-	-	-	-	-	-	-	-	-	-	
182	Maternica, telo, drugo Uterus, corpus, etc.	Ž	235	-	-	-	-	-	1	-	5	13	26	43	40	45	34	10	18	-	
183	Jajčnik, jajcevod, drugo Ovary, Fallopian tube, etc.	Ž	167	-	-	1	-	3	4	2	3	9	15	21	25	35	16	14	6	13	-
184	Nožnica, vulva, drugo Vagina, vulva, etc.	Ž	35	-	-	-	-	-	-	-	-	1	1	3	2	2	6	6	4	10	-

cont. ↓

Tabela 4. Nadaljevanje - continued

Šifra MKB	Lokacija Site	Spol Sex	Vse starosti All ages	Starost Age																		
				0-	5-	10-	15-	20-	25-	30-	35-	40-	45-	50-	55-	60-	65-	70-	75-	80+	?	
185	Prostata Prostate	M	261	-	-	-	-	-	-	-	-	-	1	3	2	12	26	68	52	31	66	-
186	Modo Testis	M	64	-	-	-	1	3	10	19	14	8	3	4	1	1	-	-	-	-	-	-
187	Penis, obodek, drugo Penis, epididymis, etc.	M	6	-	-	-	-	-	-	-	-	1	2	-	1	1	-	-	1	-	-	-
188	Mehur Bladder	M	116	-	-	-	-	-	1	1	2	1	1	7	6	27	21	19	11	19	-	
		Ž	49	-	-	-	-	-	-	-	1	1	-	3	5	6	6	11	6	10	-	
189	Ledvica, sečevod, drugo Kidney, ureter, etc.	M	105	1	-	-	-	-	-	1	1	5	7	7	15	14	18	16	5	15	-	
		Ž	63	1	-	-	-	-	-	-	-	3	5	5	6	8	9	13	8	5	-	
190	Oko Eye	M	10	-	-	-	-	-	-	-	-	-	-	1	2	2	2	2	1	-	-	
		Ž	4	1	-	-	-	-	-	-	-	-	1	-	-	1	-	-	-	1	-	
191	Možgani Brain	M	45	1	2	1	-	1	-	2	5	2	4	5	8	6	4	3	-	1	-	
		Ž	33	-	1	-	1	1	1	-	-	3	1	2	3	9	6	4	1	-	-	
192	Živčevje, drugo Nervous system, other	M	6	3	-	-	-	-	-	1	2	-	-	-	-	-	-	-	-	-	-	
		Ž	6	3	-	-	-	-	-	-	1	-	-	1	-	-	-	1	-	-	-	-
193	Ščitnica Thyroid	M	15	-	-	-	-	-	-	2	1	-	2	3	1	2	4	-	-	-	-	
		Ž	53	-	-	-	-	4	-	3	3	9	5	3	8	5	6	4	1	2	-	
194	Endokrine žleze, druge Endocrine glands, other	M	4	-	1	-	1	-	1	-	-	1	-	-	-	-	-	-	-	-	-	
		Ž	6	-	-	-	-	-	-	-	-	2	-	-	-	-	3	-	1	-	-	
195	Slabo opred. lokaliz. Ill-defined site	M	9	2	-	-	-	-	-	-	-	1	-	1	-	2	1	-	1	1	-	
		Ž	27	-	-	-	-	-	-	-	-	-	1	-	-	1	4	4	2	15	-	
196	Metastaze v bezgavkah Lymph node metastases	M	20	-	-	-	-	-	-	-	-	1	2	2	4	3	3	2	2	1	-	
		Ž	17	-	-	-	-	-	-	-	-	1	1	1	2	2	2	4	1	3	-	
197	Met. v dihalih, prebavilih Respiratory, digestive tract met.	M	42	-	-	-	-	-	-	1	1	2	-	1	7	10	7	6	2	5	-	
		Ž	65	-	-	-	-	-	-	-	-	-	4	1	4	8	9	12	6	21	-	
198	Metastaze, druge Metastases, other	M	53	-	-	-	-	-	-	-	-	2	4	6	9	6	13	6	1	6	-	
		Ž	15	-	-	-	-	-	-	-	-	-	-	1	3	3	1	2	2	3	-	
199	Malignomi, neopredeljeni Malignancies, unspecified	M	59	-	-	-	-	-	-	-	-	2	2	5	9	7	16	9	4	5	-	
		Ž	44	-	-	-	-	-	-	-	1	2	2	2	3	9	6	7	1	11	-	
200	Ne-Hodgkinovi limfomi	M	58	-	-	1	1	2	2	1	3	4	2	5	6	11	5	4	5	6	-	
202	Non-Hodgkin's lymphomas	Ž	63	1	-	1	-	-	2	2	1	5	3	2	3	10	10	6	6	11	-	
201	Hodgkinov limfom Hodgkin's disease	M	18	-	-	1	2	-	2	1	2	1	2	-	2	-	1	1	1	2	-	
		Ž	21	-	-	2	5	3	3	1	1	-	-	-	-	3	1	1	1	-	-	
203	Plazmacitom Plasmacytoma	M	31	-	-	-	-	-	-	-	-	1	2	1	3	5	4	7	5	3	-	
		Ž	35	-	-	-	-	-	-	-	-	-	-	-	3	10	5	8	4	5	-	

cont. ↓

Tabela 4. Nadaljevanje - continued

Šifra MKB ICD No.	Lokacija Site	Spol Sex	Vse starosti All ages	Starost Age																
				0-	5-	10-	15-	20-	25-	30-	35-	40-	45-	50-	55-	60-	65-	70-	75-	80+
204.0	Levkemija, limfat. akutna Leukaemia, lymphatic, acute	M Ž	14 14	7 2	- 2	- 1	- -	- -	1 -	1 1	- -	- -	- 3	1 -	- -	3 -	1 -	- 1	- -	
204.1	Levkemija, limfat. kron. Leukaemia, lymphatic, chronic	M Ž	45 30	- -	- -	- -	- -	- -	- 1	- -	1 -	- 1	4 -	4 1	7 6	6 6	6 4	7 2	10 9	- -
205	Levkemija, mieloična Leukaemia, myeloic	M Ž	29 22	1 -	1 -	- 1	- 1	- -	2 1	- 1	2 1	- -	5 -	3 2	3 1	6 5	1 3	2 1	1 5	2 -
206	Levkemija, monocitna Leukaemia, monocytic	M Ž	1 2	- -	- -	- -	- -	- -	- -	- -	- -	- -	- -	- 1	- 1	- -	- -	- -	- -	1 -
207	Levkemije, druge Leukaemias, other	M Ž	3 3	- -	- -	- -	- -	- -	- -	- -	- -	- -	- 1	2 -	- -	- -	- -	- 1	- 1	- -
208	Policitemija, prava Polycythemia vera	M Ž	5 7	- -	- -	- -	- -	- -	- -	- -	- -	- -	1 -	- 1	- 1	- -	1 4	2 -	- 1	- -
209	Mielofibroza Myelofibrosis	M Ž	3 3	- -	- -	- -	- -	- -	- -	- -	- -	1 -	- -	- -	- -	1 -	- 1	1 1	- 1	- -
Zgoraj neupoštevani																				
Not included above																				
-	Dojka, in situ Breast, in situ	Ž	15	-	-	-	-	-	-	-	1	2	3	1	3	2	1	2	-	-
-	Maternica, vrat, CIN III Uterus, cervix, CIN III	Ž	534	-	-	-	31	109	137	135	65	31	18	3	3	2	-	-	-	-
2250	Možgani, benigni tumor Brain, benign tumor	M Ž	16 40	- -	- -	- -	- -	- -	1 2	- 3	1 3	2 5	1 5	4 3	3 5	1 7	2 4	1 2	1 1	- -
2381	Možgani, neopredeljeno Brain, unspecified	M Ž	9 13	- -	1 -	- -	- -	- -	- 1	- 1	- 1	- -	1 1	2 1	2 3	1 -	1 3	1 -	1 2	- -

Tabela 5. Incidenca raka na 100 000 prebivalcev po lokaciji, spolu in starosti - Slovenija 1994

Table 5. Cancer incidence per 100 000 population by site, sex, and age - Slovenia 1994

Šifra MKB ICD No.	Lokacija Site	Spol Sex	Vse starosti All ages	Starost Age																	?
				0-4	5-9	10-14	15-19	20-24	25-29	30-34	35-39	40-44	45-49	50-54	55-59	60-64	65-69	70-74	75-79	80+	
140-209	Vse lokacije All sites	Skupaj Total	359.8	24.0	7.1	7.7	12.6	19.0	35.3	68.5	110.2	193.2	315.8	457.1	684.1	1014.9	1310.8	1409.9	1904.4	1860.9	-
		Moški Male	376.0	28.0	9.3	5.5	13.0	16.6	30.9	61.3	86.4	154.8	295.8	495.6	809.0	1292.4	1864.8	1942.7	2624.8	2660.4	-
		Ženske Female	344.5	19.7	4.9	10.0	12.3	21.5	39.7	75.8	134.6	233.9	336.5	418.7	566.2	784.9	948.4	1132.0	1541.8	1531.3	-
140	Ustnica Lip	M Ž	2.3 0.3	- -	- -	- -	- -	- -	- -	1.3 -	- -	1.2 -	1.6 -	8.3 -	1.9 -	4.1 1.9	11.4 -	8.8 -	- -	33.6 5.5	- -
141	Jezik Tongue	M Ž	4.8 0.5	- -	- -	- -	- -	- -	- -	1.3 -	3.7 -	6.0 1.3	3.2 -	9.9 1.6	20.5 -	22.5 1.9	8.5 2.3	17.5 5.0	- -	- -	- -
142	Slinavke Salivary glands	M Ž	0.4 1.1	- -	1.5 -	- -	- -	- -	- -	- -	- -	- 1.3	- -	- 1.6	- -	- 1.7	- -	4.4 6.8	9.9 5.0	6.7 11.1	- -
143	Dlesni Gum	M Ž	0.4 0.2	- -	- -	- -	- -	- -	- -	- -	- -	- -	- -	- 1.9	6.1 -	- -	- -	- 2.3	- -	- 2.8	- -
144	Ustno dno Floor of mouth	M Ž	3.7 0.3	- -	- -	- -	- -	- -	- -	1.3 -	2.5 1.3	2.4 -	3.2 -	14.9 1.6	5.6 -	16.4 1.7	17.1 -	8.8 -	- -	6.7 -	- -
145	Usta, drugo Mouth, other parts	M Ž	1.9 0.3	- -	- -	- -	- -	- -	- -	- -	- -	3.6 -	1.6 1.7	3.3 -	5.6 -	10.2 3.4	8.5 -	4.4 -	- -	- -	- -
146	Orofarinks Oropharynx	M Ž	8.5 1.6	- -	- -	- -	- -	- -	- -	- -	1.2 -	6.0 1.3	22.4 -	14.9 3.3	22.4 1.8	34.8 5.1	39.8 7.4	26.3 -	19.9 5.0	13.4 11.1	- -
147	Epifarinks Epipharynx	M Ž	0.5 0.4	- -	- -	- -	- -	- -	- -	- 1.3	- -	- -	3.2 -	- -	- 1.8	2.0 -	2.8 1.9	- -	9.9 -	- 2.8	- -

cont. ↓

Tabela 5. Nadaljevanje - continued

Šifra MKB ICD Site No.	Lokacija Site	Spol Sex	Vse starosti All ages	Starost Age																?	
				0-4	5-9	10-14	15-19	20-24	25-29	30-34	35-39	40-44	45-49	50-54	55-59	60-64	65-69	70-74	75-79		80+
148	Hipofarinks Hypopharynx	M	4.8	-	-	-	-	-	-	-	1.2	7.3	9.6	13.3	16.8	14.3	11.4	13.1	9.9	6.7	-
		Ž	-	-	-	-	-	-	-	-	-	-	-	-	-	-	-	-	-	-	-
149	Žrelo, neoznačeno Pharynx, not specified	M	0.1	-	-	-	-	-	-	-	-	-	-	-	-	-	2.8	-	-	-	-
		Ž	0.1	-	-	-	-	-	-	-	-	-	-	-	-	-	1.9	-	-	-	-
150	Požiralnik Esophagus	M	8.7	-	-	-	-	-	-	-	-	-	6.4	11.6	26.1	61.3	45.5	35.0	19.9	20.2	-
		Ž	1.2	-	-	-	-	-	-	-	-	-	-	-	-	1.7	3.7	6.8	10.0	11.1	-
151	Želodec Stomach	M	31.3	-	-	-	-	1.4	-	2.6	2.5	12.1	30.4	39.8	39.1	106.3	153.5	166.3	278.4	342.6	-
		Ž	19.4	-	-	-	-	-	1.3	1.3	1.3	7.7	9.9	24.7	17.6	35.6	57.6	54.8	145.2	149.5	-
152	Tanko črevo Small intestine	M	0.1	-	-	1.4	-	-	-	-	-	-	-	-	-	-	-	-	-	-	-
		Ž	0.7	-	-	-	-	-	-	-	-	1.3	-	1.7	3.3	-	-	1.9	2.3	-	2.8
153	Debelo črevo Colon	M	22.8	-	-	-	1.3	-	-	-	3.7	7.3	17.6	24.9	48.5	85.9	150.7	109.4	139.2	161.2	-
		Ž	20.6	-	-	-	-	-	-	-	8.9	10.2	11.6	18.1	31.7	44.1	68.8	82.2	90.1	119.1	-
154	Rektum Rectum, anus	M	23.8	-	-	-	-	-	-	1.3	4.9	4.8	11.2	29.8	54.1	92.0	105.2	113.8	298.3	188.1	-
		Ž	19.2	-	-	-	-	1.4	1.3	-	1.3	8.9	11.6	16.5	15.8	42.4	70.7	95.9	110.1	94.1	-
155	Jetra Liver	M	4.7	-	-	-	-	-	-	-	2.5	6.0	8.0	5.0	13.0	16.4	8.5	26.3	39.8	13.4	-
		Ž	2.6	2.0	-	-	-	-	-	-	3.8	-	1.7	1.6	1.8	3.4	13.0	16.0	5.0	8.3	-
156	Žolčnik, žolčni vodi Gall bladder, bile ducts	M	3.7	-	-	-	-	-	-	-	-	-	-	3.3	3.7	6.1	25.6	26.3	69.6	47.0	-
		Ž	6.3	-	-	-	-	-	-	-	-	-	-	5.0	4.9	7.0	6.8	18.6	38.8	45.1	41.5
157	Trebušna slinavka Pancreas	M	10.3	-	-	-	-	1.4	-	-	1.2	3.6	9.6	8.3	18.6	34.8	56.9	65.6	89.5	80.6	-
		Ž	8.1	-	-	-	-	-	-	-	-	1.3	1.7	4.9	3.5	11.9	26.0	36.5	75.1	66.5	-
158	Retro-, peritonej Retro-, peritoneum	M	0.3	-	-	-	-	1.4	-	-	-	-	-	-	1.7	-	-	-	4.4	-	-
		Ž	0.3	-	-	-	-	-	-	-	-	-	-	-	1.6	1.8	-	-	-	-	2.8
159	Prebavila, drugo Digestive organs, other	M	0.1	-	-	-	-	-	-	-	-	-	-	-	-	-	-	-	-	6.7	-
		Ž	0.3	-	-	-	-	-	-	-	-	-	-	-	-	-	-	1.9	-	-	5.5

cont. ↓

Tabela 5. Nadaljevanje - continued

Šifra MKB	Lokacija	Spol	Vse starosti	Starost																	?
				0-4	5-9	10-14	15-19	20-24	25-29	30-34	35-39	40-44	45-49	50-54	55-59	60-64	65-69	70-74	75-79	80+	
ICD No.	Site	Sex	All ages	Age																	
160	Nos, obnosne votil., drugo Nose, sinuses, etc.	M	1.5	-	-	-	-	1.4	-	-	1.2	-	-	3.3	5.6	4.1	-	8.8	9.9	13.4	-
		Ž	0.9	-	-	-	-	-	-	-	1.3	-	-	-	1.8	1.7	1.9	-	5.0	11.1	-
161	Grlo Larynx	M	10.3	-	-	-	1.3	-	-	1.3	2.5	7.3	12.8	24.9	31.7	42.9	51.2	21.9	9.9	26.9	-
		Ž	1.0	-	-	-	-	-	-	1.3	-	1.3	1.7	1.6	1.8	3.4	1.9	2.3	-	2.8	-
162	Sapnik, sapnica, pljuča Trachea, bronchus, lung	M	76.9	-	-	-	-	-	-	1.3	7.4	15.7	52.8	119.4	227.4	337.4	449.1	367.5	407.6	309.0	-
		Ž	15.4	-	-	-	-	-	-	3.9	3.8	8.9	9.9	18.1	24.6	44.1	53.9	57.1	85.1	47.1	-
163	Plevra, mediastin., drugo Pleura, mediastinum, etc.	M	1.5	-	-	-	-	1.4	1.3	-	1.2	2.4	1.6	-	5.6	2.0	2.8	4.4	9.9	6.7	-
		Ž	0.4	-	-	-	-	-	-	1.3	-	-	-	-	-	1.7	1.9	-	-	2.8	-
170	Kosti Bone	M	0.9	-	-	-	3.9	-	-	-	-	-	1.6	1.7	3.7	2.0	-	-	-	6.7	-
		Ž	0.7	-	-	1.4	-	-	2.6	-	-	-	-	3.3	-	3.4	-	-	-	-	-
171	Mehka tkiva Soft tissues	M	1.1	-	1.5	-	-	1.4	-	1.3	-	1.2	-	1.7	-	2.0	2.8	8.8	9.9	6.7	-
		Ž	1.9	2.0	-	-	2.7	1.4	1.3	1.3	2.5	1.3	1.7	-	3.5	5.1	1.9	4.6	5.0	-	-
172	Koža, maligni melanom Skin, malignant melanoma	M	9.9	-	-	-	-	-	1.3	6.5	6.2	12.1	9.6	16.6	14.9	30.7	28.4	52.5	59.7	47.0	-
		Ž	9.8	-	-	-	-	2.9	7.9	10.5	3.8	12.8	23.2	9.9	17.6	11.9	13.0	29.7	15.0	30.5	-
173	Koža, drugi malignomi Skin, other malignancies	M	33.5	-	-	-	-	-	2.7	3.9	3.7	13.3	20.8	41.4	57.8	79.8	162.0	236.3	328.1	349.3	-
		Ž	42.3	-	-	-	-	-	1.3	1.3	7.6	16.6	19.9	33.0	47.5	86.5	107.9	184.9	310.4	279.7	-
174	Dojka Breast	M	1.3	-	-	-	-	-	-	-	-	-	1.6	1.7	3.7	-	19.9	-	9.9	6.7	-
		Ž	71.5	-	-	-	-	-	2.6	15.7	36.8	78.0	109.4	138.5	140.7	171.2	202.7	143.8	275.3	196.6	-
180	Maternica, vrat Uterus, cervix	Ž	17.8	-	-	-	-	-	7.9	23.5	43.2	28.1	33.2	13.2	44.0	20.3	13.0	34.2	25.0	27.7	-
181	Horioepiteliom Chorioepithelioma	Ž	0.1	-	-	-	-	-	-	-	1.3	-	-	-	-	-	-	-	-	-	-
182	Maternica, telo, drugo Uterus, corpus, etc.	Ž	22.9	-	-	-	-	-	-	1.3	-	6.4	21.5	42.9	75.6	67.8	83.7	77.6	50.1	49.8	-

cont ↓

Tabela 5. Nadaljevanje - continued

Šifra MKB	Lokacija	Spol	Vse starosti	Starost																?	
				0-4	5-9	10-14	15-19	20-24	25-29	30-34	35-39	40-44	45-49	50-54	55-59	60-64	65-69	70-74	75-79		80+
ICD No.	Site	Sex	All ages	Age																	
183	Jajčnik, jajcevod, drugo Ovary, Fallopian tube, etc.	Ž	16.3	-	-	1.4	-	4.3	5.3	2.6	3.8	11.5	24.9	34.6	44.0	59.3	29.8	32.0	30.0	36.0	-
184	Nožnica, vulva, drugo Vagina, vulva, etc.	Ž	3.4	-	-	-	-	-	-	-	-	1.3	1.7	4.9	3.5	3.4	11.2	13.7	20.0	27.7	-
185	Prostata Prostate	M	27.1	-	-	-	-	-	-	-	-	1.2	4.8	3.3	22.4	53.2	193.3	227.5	308.2	443.4	-
186	Modo Testis	M	6.6	-	-	-	1.3	4.2	13.4	24.8	17.3	9.7	4.8	6.6	1.9	2.0	-	-	-	-	-
187	Penis, obmodek, drugo Penis, epididymis, etc.	M	0.6	-	-	-	-	-	-	-	-	1.2	3.2	-	1.9	2.0	-	-	9.9	-	-
188	Mehur Bladder	M	12.0	-	-	-	-	1.3	1.3	2.5	1.2	1.6	11.6	11.2	55.2	59.7	83.1	109.4	127.6	-	
		Ž	4.8	-	-	-	-	-	-	1.3	1.3	-	4.9	8.8	10.2	11.2	25.1	30.0	27.7	-	
189	Ledvica, sečevod, drugo Kidney, ureter, etc.	M	10.9	1.9	-	-	-	-	1.3	1.2	6.0	11.2	11.6	28.0	28.6	51.2	70.0	49.7	100.8	-	
		Ž	6.1	2.0	-	-	-	-	-	-	-	3.8	8.3	8.2	10.6	13.6	16.7	29.7	40.0	13.8	-
190	Oko Eye	M	1.0	-	-	-	-	-	-	-	-	-	-	1.7	3.7	4.1	5.7	8.8	9.9	-	-
		Ž	0.4	2.0	-	-	-	-	-	-	-	-	-	1.7	-	-	1.7	-	-	-	2.8
191	Možgani Brain	M	4.7	1.9	3.1	1.4	-	1.4	-	2.6	6.2	2.4	6.4	8.3	14.9	12.3	11.4	13.1	-	6.7	-
		Ž	3.2	-	1.6	-	1.4	1.4	1.3	-	-	3.8	1.7	3.3	5.3	15.3	11.2	9.1	5.0	-	-
192	Živčevje, drugo Nervous system, other	M	0.6	5.6	-	-	-	-	1.3	2.5	-	-	-	-	-	-	-	-	-	-	-
		Ž	0.6	5.9	-	-	-	-	-	-	1.3	-	-	1.6	-	-	-	-	2.3	-	-
193	Ščitnica Thyroid	M	1.6	-	-	-	-	-	2.6	1.2	-	3.2	5.0	1.9	4.1	11.4	-	-	-	-	-
		Ž	5.2	-	-	-	5.7	-	3.9	3.8	11.5	8.3	4.9	14.1	8.5	11.2	9.1	5.0	5.5	-	-
194	Endokrine žleze, druge Endocrine glands, other	M	0.4	-	1.5	-	1.3	-	1.3	-	-	1.2	-	-	-	-	-	-	-	-	-
		Ž	0.6	-	-	-	-	-	-	-	-	2.6	-	-	-	-	5.6	-	5.0	-	-

cont. ↓

Tabela 5. Nadaljevanje - continued

Šifra MKB ICD Site No.	Lokacija Site	Spol Sex	Vse starosti All ages	Starost Age																		
				0-4	5-9	10-14	15-19	20-24	25-29	30-34	35-39	40-44	45-49	50-54	55-59	60-64	65-69	70-74	75-79	80+	?	
195	Slabo opredeljena lokaliz. Ill-defined site	M	0.9	3.7	-	-	-	-	-	-	-	-	1.2	-	1.7	-	4.1	2.8	-	9.9	6.7	-
		Ž	2.6	-	-	-	-	-	-	-	-	-	-	1.7	-	-	1.7	7.4	9.1	10.0	41.5	-
196	Metastaze v bezgavkah Lymph node metastases	M	2.1	-	-	-	-	-	-	-	-	1.2	3.2	3.3	7.5	6.1	8.5	8.8	19.9	6.7	-	
		Ž	1.7	-	-	-	-	-	-	-	-	1.3	1.7	1.6	3.5	3.4	3.7	9.1	5.0	8.3	-	
197	Met. v dihalih, prebavilih Respiratory, digestive tract met.	M	4.4	-	-	-	-	-	-	1.3	1.2	2.4	-	1.7	13.0	20.4	19.9	26.3	19.9	33.6	-	
		Ž	6.3	-	-	-	-	-	-	-	-	-	6.6	1.6	7.0	13.6	16.7	27.4	30.0	58.2	-	
198	Metastaze, druge Metastases, other	M	5.5	-	-	-	-	-	-	-	-	2.4	6.4	9.9	16.8	12.3	37.0	26.3	9.9	40.3	-	
		Ž	1.5	-	-	-	-	-	-	-	-	-	-	-	1.6	5.3	5.1	1.9	4.6	10.0	8.3	-
199	Malignomi, neopredeljeni Malignancies, unspecified	M	6.1	-	-	-	-	-	-	-	-	2.4	3.2	8.3	16.8	14.3	45.5	39.4	39.8	33.6	-	
		Ž	4.3	-	-	-	-	-	-	-	1.3	2.6	3.3	3.3	5.3	15.3	11.2	16.0	5.0	30.5	-	
200 202	Ne-Hodgkinovi limfomi Non-Hodgkin's lymphomas	M	6.0	-	-	1.4	1.3	2.8	2.7	1.3	3.7	4.8	3.2	8.3	11.2	22.5	14.2	17.5	49.7	40.3	-	
		Ž	6.1	2.0	-	1.4	-	2.6	2.6	1.3	6.4	5.0	3.3	5.3	17.0	18.6	13.7	30.0	30.5	-		
201	Hodgkinov limfom Hodgkin's disease	M	1.9	-	-	1.4	2.6	-	2.7	1.3	2.5	1.2	3.2	-	3.7	-	2.8	4.4	9.9	13.4	-	
		Ž	2.0	-	-	2.9	6.8	4.3	4.0	1.3	1.3	-	-	-	-	5.1	1.9	2.3	5.0	-	-	
203	Plazmacitom Plasmacytoma	M	3.2	-	-	-	-	-	-	-	-	1.2	3.2	1.7	5.6	10.2	11.4	30.6	49.7	20.2	-	
		Ž	3.4	-	-	-	-	-	-	-	-	-	-	-	5.3	17.0	9.3	18.3	20.0	13.8	-	
204.0	Levkemija, limfatična, ak. Leukaemia, lymphatic, ac.	M	1.5	13.1	-	-	-	-	1.3	1.3	-	-	-	-	1.9	-	-	13.1	9.9	-	-	
		Ž	1.4	3.9	3.2	1.4	-	-	-	1.3	-	-	5.0	-	-	5.1	-	2.3	-	2.8	-	
204.1	Levkemija, limfatična, kron. Leukaemia, lymphatic, chron.	M	4.6	-	-	-	-	-	-	-	-	1.2	-	6.6	7.4	14.3	17.1	26.3	69.6	67.2	-	
		Ž	2.9	-	-	-	-	-	-	1.3	-	-	1.6	-	1.8	10.2	11.2	9.1	10.0	24.9	-	
205	Levkemija, mieloična Leukaemia, myeloid	M	3.0	1.9	1.5	-	-	-	2.7	-	2.5	-	8.0	5.0	5.6	12.3	2.8	8.8	9.9	13.4	-	
		Ž	2.1	-	-	1.4	1.4	-	-	1.3	1.3	1.3	-	-	3.5	1.7	9.3	6.8	5.0	13.8	-	
206	Levkemija, monocitna Leukaemia, monocytic	M	0.1	-	-	-	-	-	-	-	-	-	-	-	-	-	-	-	-	6.7	-	
		Ž	0.2	-	-	-	-	-	-	-	-	-	-	-	1.8	1.7	-	-	-	-	-	

cont. ↓

Tabela 5. Nadaljevanje - continued

Šifra MKB	Lokacija	Spol	Vse starosti	Starost																?		
				0-4	5-9	10-14	15-19	20-24	25-29	30-34	35-39	40-44	45-49	50-54	55-59	60-64	65-69	70-74	75-79		80+	
ICD No.	Site	Sex	All ages	Age																		
207	Levkemije, druge	M	0.3	-	-	-	-	-	-	-	-	-	-	-	1.7	3.7	-	-	-	-	-	-
	Leukaemias, other	Ž	0.3	-	-	-	-	-	-	-	-	-	1.3	-	-	-	-	-	2.3	5.0	-	-
208	Policitemija, prava	M	0.5	-	-	-	-	-	-	-	-	-	1.6	-	1.9	-	2.8	8.8	-	-	-	-
	Polycythemia vera	Ž	0.7	-	-	-	-	-	-	-	-	-	-	-	1.8	1.7	-	9.1	-	2.8	-	-
209	Mielofibroza	M	0.3	-	-	-	-	-	-	-	-	1.2	-	-	-	-	2.8	-	9.9	-	-	-
	Myelofibrosis	Ž	0.3	-	-	-	-	-	-	-	-	-	-	-	-	-	1.9	2.3	5.0	-	-	-
Zgoraj neupoštevani																						
Not included above																						
	Dojka, in situ	Ž	1.5	-	-	-	-	-	-	-	1.3	2.6	5.0	1.6	5.3	3.4	1.9	4.6	-	-	-	-
	Breast, in situ																					
	Maternica, vrat, CIN III	Ž	52.1	-	-	-	-	44.6	144.0	178.9	171.4	83.0	51.4	29.7	5.3	5.1	3.7	-	-	-	-	-
	Uterus, cervix, CIN III																					
2250	Možgani, benigni tumor	M	1.7	-	-	-	-	-	-	1.3	-	1.2	3.2	1.7	7.5	6.1	2.8	8.8	9.9	-	-	-
	Brain, benign tumor	Ž	3.9	-	-	-	-	-	-	2.6	3.8	3.8	8.3	8.2	5.3	8.5	13.0	9.1	10.0	2.8	-	-
2381	Možgani, neopredeljeno	M	0.9	-	1.5	-	-	-	-	-	-	-	1.6	-	3.7	4.1	2.8	4.4	9.9	-	-	-
	Brain, unspecified	Ž	1.3	-	-	-	-	-	1.3	-	1.3	1.3	-	1.6	1.8	5.1	-	6.8	-	5.5	-	-

Tabela 6. Število novih primerov raka po zdravstvenih regijah, po najpogostejših lokacijah in spolu - Slovenija 1994

Table 6. Number of new cancer cases by health regions, by most frequent sites and sex - Slovenia 1994

Zdravstvena regija Health region	Spol Sex	Skupaj 140 - 209 All sites	L o k a c i j a (šifre MKB)* Site (ICD No.)*									Druge lokal. Other sites	219**
			151	153	154	162	173	174	180	182	185		
Slovenija skupaj	M	3625	302	220	229	741	323	13	-	-	261	1536	-
Slovenia, total	Ž	3530	199	211	197	158	433	733	182	235	-	1182	534
Celje	M	374	37	26	31	79	34	-	-	-	20	147	-
	Ž	397	19	21	27	20	35	79	26	39	-	131	64
Gorica	M	221	12	10	14	45	17	1	-	-	17	105	-
	Ž	187	11	13	7	6	14	45	5	13	-	73	32
Koper	M	296	21	14	14	55	37	1	-	-	23	131	-
	Ž	250	10	10	13	14	36	49	17	21	-	80	31
Kranj	M	308	25	19	18	69	15	1	-	-	24	137	-
	Ž	346	26	26	13	6	44	67	16	24	-	124	71
Ljubljana	M	1140	96	67	60	246	105	5	-	-	73	488	-
	Ž	1178	53	78	55	60	143	266	45	74	-	404	150
Ljublj. občine	M	635	45	39	36	130	72	3	-	-	39	271	-
	Ž	710	34	49	33	39	95	152	23	44	-	241	96
Maribor	M	542	47	35	40	113	52	1	-	-	28	226	-
	Ž	505	42	21	36	20	55	112	35	27	-	157	100
Marib. občine	M	322	23	20	23	72	33	1	-	-	17	133	-
	Ž	332	24	16	20	17	38	73	15	18	-	111	68
Murska Sobota	M	277	28	19	12	41	38	2	-	-	34	103	-
	Ž	244	16	22	19	6	43	36	8	11	-	83	11
Novo mesto	M	247	9	21	26	51	12	-	-	-	30	98	-
	Ž	236	12	13	17	17	35	45	14	13	-	70	22
Ravne	M	220	27	9	14	42	13	2	-	-	12	101	-
	Ž	187	10	7	10	9	28	34	16	13	-	60	53

* Opis šifer MKB:

Description of the ICD numbers:

151 Želodec
Stomach

153 Debelo črevo
Colon

154 Rektum
Rectum, anus

162 Sapnik, sapnica, pljuča
Trachea, bronchus, lung

173 Koža, drugi malignomi
Skin, other malignancies

174 Dojka
Breast

180 Maternica, vrat
Uterus, cervix

182 Maternica, telo, drugo
Uterus, corpus, etc.

185 Prostata
Prostate

** Neupoštevano v skupnem številu: 219 Maternica, vrat, CIN III
Not included in all sites: Uterus, cervix, CIN III

Tabela 7. Število novih primerov raka, ugotovljenih v bolnišnicah, ter število in odstotek mikroskopsko potrjenih primerov, po lokaciji in spolu - Slovenija 1994

Table 7. Total number of new cancer cases diagnosed in hospitals and number and percentage of microscopically confirmed cases, by site and sex - Slovenia 1994

Šifra MKB*	L o k a c i j a	Spol	Število novih primerov	Mikroskopsko potrjeni primeri	
				Število	Odstotek**
ICD* No.	Site	Sex	Number of new cases	Microscopically confirmed cases Number	Per cent**
140 - 209	Vse lokacije All sites	Skupaj Total	6 893	6 382	93
		Moški Male	3 483	3 216	92
		Ženske Female	3 410	3 166	93
140	Ustnica	M	22	22	100
	Lip	Ž	2	2	
141	Jezik	M	46	46	100
	Tongue	Ž	5	5	
142	Slinavke	M	4	4	
	Salivary glands	Ž	11	11	
143	Dlesni	M	4	4	
	Gum	Ž	2	2	
144	Ustno dno	M	36	36	100
	Floor of mouth	Ž	3	3	
145	Usta, druge	M	18	18	100
	mouth, other parts	Ž	3	3	
146	Orofarinks	M	82	82	100
	Oropharynx	Ž	15	15	100
147	Epifarinks	M	5	5	
	Epipharynx	Ž	4	4	
148	Hipofarinks	M	46	46	100
	Hypopharynx	Ž	-	-	
149	Žrelo, neoznačeno	M	1	-	
	Pharynx, not specified	Ž	1	1	
150	Požiralnik	M	79	74	94
	Esophagus	Ž	10	8	
151	Želodec	M	278	258	93
	Stomach	Ž	182	164	90
152	Tanko črevo	M	1	1	
	Small intestine	Ž	7	6	

cont. ↓

Tabela 7. Nadaljevanje - continued

Šifra MKB*	L o k a c i j a	Spol	Število novih primerov	Mikroskopsko potrjeni primeri	
				Število	Odstotek**
ICD* No.	Site	Sex	Number of new cases	Microscopically confirmed cases Number	Per cent**
153	Debelo črevo	M	210	197	94
	Colon	Ž	203	184	91
154	Rektum	M	224	209	93
	Rectum, anus	Ž	189	174	92
155	Jetra	M	45	42	93
	Liver	Ž	27	27	100
156	Žolčnik, žolčni vodi	M	33	24	73
	Gall bladder, bile ducts	Ž	57	46	81
157	Trebušna slinavka	M	93	53	57
	Pancreas	Ž	75	35	47
158	Retro-, peritonej	M	3	3	
	Retro-, peritoneum	Ž	3	3	
159	Prebavila, drugo	M	-	-	
	Digestive organs, other	Ž	1	1	
160	Nos, obnosne votline, drugo	M	14	14	
	Nose, sinuses, etc.	Ž	9	9	
161	Grlo	M	98	98	100
	Larynx	Ž	10	9	
162	Sapnik, sapnica, pljuča	M	713	669	94
	Trachea, bronchus, lung	Ž	154	138	90
163	Plevra, mediastin., drugo	M	13	12	
	Pleura, mediastinum, etc.	Ž	4	3	
170	Kosti	M	9	9	
	Bone	Ž	7	7	
171	Mehka tkiva	M	11	11	
	Soft tissues	Ž	19	19	100
172	Koža, maligni melanom	M	95	94	99
	Skin, malignant melanoma	Ž	100	99	99
173	Koža, drugi malignomi	M	323	318	98
	Skin, other malignancies	Ž	432	420	97
174	Dojka	M	13	13	
	Breast	Ž	714	685	96
180	Maternica, vrat	Ž	182	180	99
	Uterus, cervix				
181	Horioepiteliom	Ž	1	1	
	Chorioepithelioma				

cont. ↓

Tabela 7. Nadaljevanje - continued

Šifra MKB*	L o k a c i j a	Spol	Število novih primerov	Mikroskopsko potrjeni primeri	
				Število	Odstotek**
ICD* No.	Site	Sex	Number of new cases	Microscopically confirmed cases Number	Per cent**
182	Maternica, telo, drugo Uterus, corpus, etc.	Ž	233	232	100
183	Jajčnik, jajcevod, drugo Ovary, Fallopian tube, etc.	Ž	162	155	96
184	Nožnica, vulva, drugo Vagina, vulva, etc.	Ž	35	34	97
185	Prostata Prostate	M	238	207	87
186	Modo Testis	M	64	64	100
187	Penis, obmodek, drugo Penis, epididymis, etc.	M	5	5	
188	Mehur Bladder	M	110	104	95
		Ž	45	43	96
189	Ledvica, sečevod, drugo Kidney, ureter, etc.	M	100	89	89
		Ž	61	52	85
190	Oko Eye	M	10	8	
		Ž	4	3	
191	Možgani Brain	M	45	44	98
		Ž	32	28	88
192	Živčevje, drugo Nervous system, other	M	6	6	
		Ž	6	6	
193	Ščitnica Thyroid	M	14	14	
		Ž	53	53	100
194	Endokrine žleze, druge Endocrine glands, other	M	4	4	
		Ž	6	6	
195	Slabo opredeljena lokaliz. Ill-defined site	M	7	6	
		Ž	21	12	57
196	Metastaze v bezgavkah Lymph node metastases	M	20	20	100
		Ž	17	17	100
197	Met. v dihalih, prebavilih Respiratory, digestive tract met.	M	33	18	55
		Ž	55	34	62
198	Metastaze, druge Metastases, other	M	53	26	49
		Ž	15	5	33
199	Malignomi, neopred. Malignancies, unspecified	M	50	34	68
		Ž	34	23	68

cont. ↓

Tabela 7. Nadaljevanje - continued

Šifra MKB*	L o k a c i j a	Spol	Število novih primerov	Mikroskopsko potrjeni primeri	
				Število	Odstotek**
ICD* No.	Site	Sex	Number of new cases	Microscopically confirmed cases Number	Per cent**
200	Ne-Hodgkinovi limfomi	M	58	58	100
202	Non-Hodgkin's lymphomas	Ž	63	63	100
201	Hodgkinov limfom Hodgkin's disease	M	17	17	100
		Ž	21	21	100
203	Plazmacitom Plasmacytoma	M	31	31	100
		Ž	34	34	100
204.0	Levkemija, limfatična, akut. Leukaemia, lymphatic, acute	M	14	14	
		Ž	14	14	
204.1	Levkemija, limfatična, kron. Leukaemia, lymphatic, chronic	M	44	44	100
		Ž	30	30	100
205	Levkemija, mieloična Leukaemia, myeloic	M	29	29	100
		Ž	22	22	100
206	Levkemija, monocitna Leukaemia, monocytic	M	1	1	
		Ž	2	2	
207	Levkemije, druge Leukaemias, other	M	3	3	
		Ž	3	3	
208	Policitemija, prava Polycythemia vera	M	5	5	
		Ž	7	7	
209	Mielofibroza Myelofibrosis	M	3	3	
		Ž	3	3	
Zgoraj neupoštevani					
Not included above					
-	Dojka, in situ Breast, in situ	Ž	15	15	100
2340	Maternica, vrat, in situ Uterus, cervix, in situ	Ž	534	534	100
2250	Možgani, benigni tumor Brain, benign tumor	M	15	14	93
		Ž	40	39	98
2381	Možgani, neopredeljeno Brain, unspecified	M	8	-	
		Ž	12	-	

* International classification of diseases, eighth revision, 1965

** Odstotki niso računani pri številih pod 15
Percentages are not calculated for less than 15 cases

Tabela 8. Število histološko (in citološko) potrjenih novih primerov raka - po histološki vrsti in lokaciji - Slovenija 1994

Table 8. Number of histologically (and cytologically) confirmed new cancer cases by histologic type and site - Slovenia 1994

Histološka vrsta	L o k a c i j a (šifra MKB) - Site (ICD No.)											
	Skupaj	140 - 209	140	141	142	143	144	145	146	147	148	149
Histologic type	All sites											cont. →
Vse vrste - hist.(cit.)	5602(775)	23 (1)	50 (1)	13 (2)	6	39	21	97	9	46	1	-
All types - hist.(cyt.)												
Carcinoma non specified	335 (232)	-	2 (1)	1	-	-	-	1	-	3	2	-
Small cell carcinoma	113 (53)	-	-	-	-	-	-	-	-	-	-	-
Papillary carcinoma	3	-	-	-	-	-	-	-	-	-	-	-
Squamous carcinoma	962 (105)	23 (1)	46	-	6	38	19	87	6	44	1	-
Basal cell carcinoma	529 (43)	-	-	-	-	-	-	-	-	-	-	-
Transitional cell ca.	156	-	-	-	-	-	-	-	-	-	-	-
Adenocarcinoma	2657 (201)	-	1	5 (1)	-	1	1	-	-	-	-	-
Mucoepidermoid carcinoma	4 (1)	-	-	3 (1)	-	-	-	-	-	-	-	-
Fibrosarcoma	-	-	-	-	-	-	-	-	-	-	-	-
Fibrohistiocytic sarcoma	11 (1)	-	-	-	-	-	-	-	-	-	-	-
Liposarcoma	4	-	-	-	-	-	-	-	-	-	-	-
Leiomyosarcoma	15	-	-	-	-	-	-	-	-	-	-	-
Rhabdomyosarcoma	3 (2)	-	-	-	-	-	-	-	-	-	-	-
Endothelial vessels sarcoma	2	-	-	-	-	-	-	-	-	-	-	-
Perivascular sarcoma	2	-	-	-	-	-	-	-	-	-	-	-
Malignant mesothelioma	7 (2)	-	-	-	-	-	-	-	-	-	-	-
Neural sarcoma	8 (1)	-	-	-	-	-	-	-	-	-	-	-
Malignant paraganglioma	-	-	-	-	-	-	-	-	-	-	-	-
Malignant mesenchymoma	-	-	-	-	-	-	-	-	-	-	-	-
Miscellaneous sarcoma	7 (2)	-	-	-	-	-	-	-	-	-	-	-
Unclassified soft tissue sarcoma	6 (2)	-	-	-	-	-	-	-	-	-	-	-
Osteosarcoma	5	-	-	-	-	-	-	-	-	-	-	-
Chondrosarcoma	7	-	-	-	-	-	-	-	-	-	-	-
Complex mixed and stromal malignoma	14	-	-	1	-	-	-	-	-	-	-	-
Retinoblastoma	1	-	-	-	-	-	-	-	-	-	-	-
Cystosarcoma phyllodes	1	-	-	-	-	-	-	-	-	-	-	-
Malignant melanoma	207 (4)	-	-	-	-	-	-	-	-	-	-	-
Specialized gonadal malignoma	-	-	-	-	-	-	-	-	-	-	-	-
Dysgerminoma and seminoma	39	-	-	-	-	-	-	-	-	-	-	-
Other germ cell malignoma	32	-	-	-	-	-	-	-	-	-	-	-
Trophoblastic malignoma	5	-	-	-	-	-	-	-	-	-	-	-
Brenner tumor	-	-	-	-	-	-	-	-	-	-	-	-
Malignant glioma	69	-	-	-	-	-	-	-	-	-	-	-
Malignant meningioma	-	-	-	-	-	-	-	-	-	-	-	-
Non Hodgkin lymphoma	149 (29)	-	1	3	-	-	-	10	-	-	-	-
Hodgkin lymphoma	34 (6)	-	-	-	-	-	-	-	-	-	-	-
Plasma cell tumors	42 (23)	-	-	-	-	-	-	-	-	-	-	-
Leukemia except chronic lymphoid	70 (18)	-	-	-	-	-	-	-	-	-	-	-
Chronic lymphoid leukemia	53 (21)	-	-	-	-	-	-	-	-	-	-	-
Other lymphoreticular neoplasms	-	-	-	-	-	-	-	-	-	-	-	-
Mast cell sarcoma	-	-	-	-	-	-	-	-	-	-	-	-
Miscellaneous malignoma	14 (8)	-	-	-	-	-	-	-	-	-	-	-
Small cell malignoma	3	-	-	-	-	-	-	-	-	-	-	-
Malignoma non specified	33 (21)	-	-	-	-	-	-	-	-	-	-	-

Tabela 8. Nadaljevanje - continued

<i>Histološka vrsta</i> <i>Histologic type</i>	<i>Skupaj</i> <i>All sites</i>		<i>L o k a c i j a (šifra MKB) - Site (ICD No.)</i>												
	140 - 209	150	151	152	153	154	155	156	157	158	159	<i>cont. →</i>			
Vse vrste - hist.(cit.)	5602(775)	76 (5)	416 (4)	7	-	379 (2)	382	&	57(12)	65 (5)	67(20)	6	-	1	-
All types - hist.(cyl.)															
Carcinoma non specified	335 (232)	4 (3)	30 (1)	1	-	19	-	15	-	-	11	-	11 (2)	-	-
Small cell carcinoma	113 (53)	1 (1)	1	-	-	-	-	-	-	-	-	-	1	-	-
Papillary carcinoma	3	-	-	-	-	-	-	-	-	-	-	-	-	-	-
Squamous carcinoma	962 (105)	66	-	-	-	-	-	6	-	-	1	-	-	-	-
Basal cell carcinoma	529 (43)	-	-	-	-	-	-	2	-	-	-	-	-	-	-
Transitional cell ca.	156	-	-	-	-	-	-	1	-	-	-	-	-	-	-
Adenocarcinoma	2657 (201)	4 (1)	360 (2)	-	-	353 (2)	353	-	55(10)	50 (5)	54(16)	-	-	1	-
Mucoepidermoid carcinoma	4 (1)	1	-	-	-	-	-	-	-	-	-	-	-	-	-
Fibrosarcoma	-	-	-	-	-	-	-	-	-	-	-	-	-	-	-
Fibrohistiocytic sarcoma	11 (1)	-	1	-	-	-	-	-	-	-	-	-	-	-	-
Liposarcoma	4	-	-	-	-	-	-	-	-	-	-	-	2	-	-
Leiomyosarcoma	15	-	3	-	-	1	-	-	-	-	-	-	1	-	-
Rhabdomyosarcoma	3 (2)	-	-	-	-	-	-	-	-	-	-	-	1	-	-
Endothelial vessels sarcoma	2	-	-	-	-	-	-	-	-	-	-	-	-	-	-
Perivascular sarcoma	2	-	-	-	-	-	-	-	-	-	-	-	-	-	-
Malignant mesothelioma	7 (2)	-	-	-	-	-	-	-	-	-	-	-	-	-	-
Neural sarcoma	8 (1)	-	-	1	-	-	-	-	-	-	-	-	-	-	-
Malignant paraganglioma	-	-	-	-	-	-	-	-	-	-	-	-	-	-	-
Malignant mesenchymoma	-	-	-	-	-	-	-	-	-	-	-	-	-	-	-
Miscellaneous sarcoma	7 (2)	-	-	-	-	-	-	-	(1)	-	-	-	-	-	-
Unclassified															
soft tissue sarcoma	6 (2)	-	-	-	-	-	-	-	-	-	-	-	-	-	-
Osteosarcoma	5	-	-	-	-	-	-	-	-	-	-	-	-	-	-
Chondrosarcoma	7	-	-	-	-	-	-	-	-	-	-	-	-	-	-
Complex mixed and stromal malignoma	14	-	1	-	1	-	-	-	-	-	-	-	-	-	-
Retinoblastoma	1	-	-	-	-	-	-	-	-	-	-	-	-	-	-
Cystosarcoma phyllodes	1	-	-	-	-	-	-	-	-	-	-	-	-	-	-
Malignant melanoma	207 (4)	-	-	-	-	-	-	-	-	-	-	-	-	-	-
Specialized gonadal malignoma	-	-	-	-	-	-	-	-	-	-	-	-	-	-	-
Dysgerminoma and seminoma	39	-	-	-	-	-	-	-	-	-	-	-	1	-	-
Other germ cell malignoma	32	-	-	-	-	-	-	-	-	-	-	-	1	-	-
Trophoblastic malignoma	5	-	-	-	-	-	-	-	-	-	-	-	-	-	-
Brenner tumor	-	-	-	-	-	-	-	-	-	-	-	-	-	-	-
Malignant glioma	69	-	-	-	-	-	-	-	-	-	-	-	-	-	-
Malignant meningioma	-	-	-	-	-	-	-	-	-	-	-	-	-	-	-
Non Hodgkin lymphoma	149 (29)	-	17 (1)	3	-	3	-	-	-	-	-	-	(1)	-	-
Hodgkin lymphoma	34 (6)	-	-	1	-	-	-	-	-	-	-	-	-	-	-
Plasma cell tumors	42 (23)	-	-	-	-	-	-	-	-	-	-	-	-	-	-
Leukemia except chronic lymphoid	70 (18)	-	-	-	-	-	-	-	-	-	-	-	-	-	-
Chronic lymphoid leukemia	53 (21)	-	-	-	-	-	-	-	-	-	-	-	-	-	-
Other lymphoreticular neoplasms	-	-	-	-	-	-	-	-	-	-	-	-	-	-	-
Mast cell sarcoma	-	-	-	-	-	-	-	-	-	-	-	-	-	-	-
Miscellaneous malignoma	14 (8)	-	-	-	-	-	-	-	-	-	-	-	-	-	-
Small cell malignoma	3	-	-	-	-	-	-	-	-	2	-	-	-	-	-
Malignoma non specified	33 (21)	-	3	-	-	3	-	5	-	2 (1)	1	-	1 (1)	-	-

Tabela 8. Nadaljevanje - continued

Histološka vrsta Histologic type	Skupaj 140 - 209 All sites	L o k a c i j a (šifra MKB) - Site (ICD No.)									
		160	161	162	163	170	171	172	173	174	cont. →
Vse vrste - hist.(cit.)	5602(775)	22 (1)	107	-	504(304)	13 (2)	15 (1)	26 (4)	190 (3)	677(61)	569(129)
All types - hist.(cyt.)											
Carcinoma non specified	335 (232)	2 -	1 -	96 (97)	- -	- -	- -	- -	- -	13 (2)	18 (96)
Small cell carcinoma	113 (53)	- -	- -	105 (50)	- -	- -	- -	- -	- -	1 -	- -
Papillary carcinoma	3 -	- -	- -	- -	- -	- -	- -	- -	- -	2 -	- -
Squamous carcinoma	962 (105)	12 -	106 -	193 (88)	- -	- -	- -	- -	- -	129 (12)	- -
Basal cell carcinoma	529 (43)	- -	- -	- -	- -	- -	- -	- -	- -	519 (43)	3 -
Transitional cell ca.	156 -	- -	- -	- -	- -	- -	- -	- -	- -	- -	- -
Adenocarcinoma	2657 (201)	3 -	- -	107 (66)	- -	- -	- -	- -	- -	4 (1)	543 (33)
Mucoepidermoid carcinoma	4 (1)	- -	- -	- -	- -	- -	- -	- -	- -	- -	- -
Fibrosarcoma	- -	- -	- -	- -	- -	- -	- -	- -	- -	- -	- -
Fibrohistiocytic sarcoma	11 (1)	- -	- -	- -	- -	- -	7 (1)	- -	- -	3 -	- -
Liposarcoma	4 -	- -	- -	- -	1 -	- -	1 -	- -	- -	- -	- -
Leiomyosarcoma	15 -	- -	- -	- -	- -	- -	3 -	- -	- -	- -	- -
Rhabdomyosarcoma	3 (2)	- -	- -	- -	- -	- -	2 (1)	- -	- -	- -	- -
Endothelial vessels sarcoma	2 -	- -	- -	- -	- -	- -	- -	- -	- -	2 -	- -
Perivascular sarcoma	2 -	- -	- -	- -	- -	- -	- -	- -	- -	- -	- -
Malignant mesothelioma	7 (2)	- -	- -	- -	7 (2)	- -	- -	- -	- -	- -	- -
Neural sarcoma	8 (1)	1 -	- -	- -	- -	- -	1 -	- -	- -	- -	- -
Malignant paraganglioma	- -	- -	- -	- -	- -	- -	- -	- -	- -	- -	- -
Malignant mesenchymoma	- -	- -	- -	- -	- -	- -	- -	- -	- -	- -	- -
Miscellaneous sarcoma	7 (2)	- -	- -	- -	- -	2 (1)	4 -	- -	- -	- -	- -
Unclassified											
soft tissue sarcoma	6 (2)	- -	- -	- -	1 -	- -	5 (2)	- -	- -	- -	- -
Osteosarcoma	5 -	- -	- -	- -	1 -	4 -	- -	- -	- -	- -	- -
Chondrosarcoma	7 -	- -	- -	- -	- -	6 -	1 -	- -	- -	- -	- -
Complex mixed and stromal malignoma	14 -	- -	- -	- -	- -	- -	- -	- -	- -	- -	1 -
Retinoblastoma	1 -	- -	- -	- -	- -	- -	- -	- -	- -	- -	- -
Cystosarcoma phyllodes	1 -	- -	- -	- -	- -	- -	- -	- -	- -	- -	1 -
Malignant melanoma	207 (4)	2 -	- -	- -	- -	- -	- -	100 (3)	- -	- -	2 -
Specialized gonadal malignoma	- -	- -	- -	- -	- -	- -	- -	- -	- -	- -	- -
Dysgerminoma and seminoma	39 -	- -	- -	- -	1 -	- -	- -	- -	- -	- -	- -
Other germ cell malignoma	32 -	- -	- -	- -	2 -	- -	- -	- -	- -	- -	- -
Trophoblastic malignoma	5 -	- -	- -	- -	- -	- -	- -	- -	- -	- -	- -
Brenner tumor	- -	- -	- -	- -	- -	- -	- -	- -	- -	- -	- -
Malignant glioma	69 -	- -	- -	- -	- -	- -	- -	- -	- -	- -	- -
Malignant meningioma	- -	- -	- -	- -	- -	- -	- -	- -	- -	- -	- -
Non Hodgkin lymphoma	149 (29)	1 -	- -	- -	- -	1 -	1 -	- -	- -	3 (1)	- -
Hodgkin lymphoma	34 (6)	- (1)	- -	- -	- -	- -	- -	- -	- -	- -	- -
Plasma cell tumors	42 (23)	- -	- -	- -	- -	- -	- -	- -	- -	- -	- -
Leukemia except chronic lymphoid	70 (18)	- -	- -	- -	- -	- -	- -	- -	- -	- -	- -
Chronic lymphoid leukemia	53 (21)	- -	- -	- -	- -	- -	- -	- -	- -	- -	- -
Other lymphoreticular neoplasms	- -	- -	- -	- -	- -	- -	- -	- -	- -	- -	- -
Mast cell sarcoma	- -	- -	- -	- -	- -	- -	- -	- -	- -	- -	- -
Miscellaneous malignoma	14 (8)	- -	- -	- -	- -	1 -	- -	- -	- -	- -	- -
Small cell malignoma	3 -	- -	- -	- -	- -	- -	1 -	- -	- -	- -	- -
Malignoma non specified	33 (21)	1 -	- -	3 (3)	- -	1 -	- -	- -	- -	1 (2)	1 -

Tabela 8. Nadaljevanje - continued

Histološka vrsta <i>Histologic type</i>	Skupaj <i>All sites</i>		L o k a c i j a (šifra MKB) - Site (ICDNo.)														
	140 - 209	180	181	182	183	184	185	186	187	188	189	<i>cont. →</i>					
Vse vrste - hist.(cit.)	5602(775)	180	-	1	-	231 (1)	146 (9)	34	-	198 (8)	64	-	5	-	146 (1)	134 (7)	
All types - hist.(cyt.)																	
Carcinoma non specified	335 (232)	15	-	-	-	1	-	4 (1)	1	-	47 (2)	-	-	-	-	4 (1)	-
Small cell carcinoma	113 (53)	-	-	-	-	-	-	1	-	-	-	-	-	-	-	-	-
Papillary carcinoma	3	-	-	-	-	-	-	1	-	-	-	-	-	-	-	-	-
Squamous carcinoma	962 (105)	142	-	-	-	-	-	21	-	-	-	-	4	-	2	-	-
Basal cell carcinoma	529 (43)	-	-	-	-	-	-	5	-	-	-	-	-	-	-	-	-
Transitional cell ca.	156	-	-	-	-	-	-	-	-	2	-	-	-	-	-	136	17
Adenocarcinoma	2657 (201)	22	-	-	-	220 (1)	137 (8)	5	-	148 (5)	-	-	-	-	3	-	112 (7)
Mucoepidermoid carcinoma	4 (1)	-	-	-	-	-	-	-	-	-	-	-	-	-	-	-	-
Fibrosarcoma	-	-	-	-	-	-	-	-	-	-	-	-	-	-	-	-	-
Fibrohistiocytic sarcoma	11 (1)	-	-	-	-	-	-	-	-	-	-	-	-	-	-	-	-
Liposarcoma	4	-	-	-	-	-	-	-	-	-	-	-	-	-	-	-	-
Leiomyosarcoma	15	-	-	-	-	2	-	-	-	1	-	-	-	-	1	-	1
Rhabdomyosarcoma	3 (2)	-	-	-	-	-	-	-	-	-	-	-	-	-	-	-	-
Endothelial vessels sarcoma	2	-	-	-	-	-	-	-	-	-	-	-	-	-	-	-	-
Perivascular sarcoma	2	-	-	-	-	-	-	-	-	-	-	-	-	-	-	-	-
Malignant mesothelioma	7 (2)	-	-	-	-	-	-	-	-	-	-	-	-	-	-	-	-
Neural sarcoma	8 (1)	-	-	-	-	-	-	-	-	-	-	-	-	-	-	-	-
Malignant paraganglioma	-	-	-	-	-	-	-	-	-	-	-	-	-	-	-	-	-
Malignant mesenchymoma	-	-	-	-	-	-	-	-	-	-	-	-	-	-	-	-	-
Miscellaneous sarcoma	7 (2)	-	-	-	-	-	-	-	-	-	-	-	-	-	-	-	-
Unclassified																	
soft tissue sarcoma	6 (2)	-	-	-	-	-	-	-	-	-	-	-	-	-	-	-	-
Osteosarcoma	5	-	-	-	-	-	-	-	-	-	-	-	-	-	-	-	-
Chondrosarcoma	7	-	-	-	-	-	-	-	-	-	-	-	-	-	-	-	-
Complex mixed and stromal malignoma	14	-	-	-	-	8	-	-	-	-	-	-	-	-	-	-	2
Retinoblastoma	1	-	-	-	-	-	-	-	-	-	-	-	-	-	-	-	-
Cystosarcoma phyllodes	1	-	-	-	-	-	-	-	-	-	-	-	-	-	-	-	-
Malignant melanoma	207 (4)	-	-	-	-	-	-	1	-	-	-	-	-	-	-	-	-
Specialized gonadal malignoma	-	-	-	-	-	-	-	-	-	-	-	-	-	-	-	-	-
Dysgerminoma and seminoma	39	-	-	-	-	-	1	-	-	-	-	35	-	-	-	-	-
Other germ cell malignoma	32	-	-	-	-	-	2	-	-	-	-	25	-	-	-	-	-
Trophoblastic malignoma	5	-	-	-	1	-	1	-	-	-	-	3	-	-	-	-	-
Brenner tumor	-	-	-	-	-	-	-	-	-	-	-	-	-	-	-	-	-
Malignant glioma	69	-	-	-	-	-	-	-	-	-	-	-	-	-	-	-	-
Malignant meningioma	-	-	-	-	-	-	-	-	-	-	-	-	-	-	-	-	-
Non Hodgkin lymphoma	149 (29)	-	-	-	-	-	-	-	-	-	1	-	-	-	-	-	2
Hodgkin lymphoma	34 (6)	-	-	-	-	-	-	-	-	-	-	-	-	-	-	-	-
Plasma cell tumors	42 (23)	-	-	-	-	-	-	-	-	-	-	-	-	-	-	-	-
Leukemia except chronic lymphoid	70 (18)	-	-	-	-	-	-	-	-	-	-	-	-	-	-	-	-
Chronic lymphoid leukemia	53 (21)	-	-	-	-	-	-	-	-	-	-	-	-	-	-	-	-
Other lymphoreticular neoplasms	-	-	-	-	-	-	-	-	-	-	-	-	-	-	-	-	-
Mast cell sarcoma	-	-	-	-	-	-	-	-	-	-	-	-	-	-	-	-	-
Miscellaneous malignoma	14 (8)	1	-	-	-	-	-	-	-	-	-	-	-	-	-	-	-
Small cell malignoma	3	-	-	-	-	-	-	-	-	-	-	-	-	-	-	-	-
Malignoma non specified	33 (21)	-	-	-	-	-	-	-	-	(1)	-	-	1	-	-	-	-

Tabela 8. Nadaljevanje - continued

Histološka vrsta Histologic type	Skupaj All sites	L o k a c i j a (šifra MKB) - Site (ICD No.)											
		140 - 209	190	191	192	193	194	195	196	197	198	199	
Vse vrste - hist.(cit.)	5602(775)	11	-	72	-	10 (2)	63 (4)	8 (2)	14 (4)	19(18)	29(23)	18(13)	29(28)
All types - hist.(cyt.)													
Carcinoma non specified	335 (232)	-	-	-	-	-	5 (2)	2 (1)	1 (1)	6 (6)	8 (4)	2 (5)	9 (7)
Small cell carcinoma	113 (53)	-	-	-	-	-	-	-	-	-	(1)	2	1 (1)
Papillary carcinoma	3	-	-	-	-	-	-	-	-	-	-	-	-
Squamous carcinoma	962 (105)	-	-	-	-	-	-	1	-	6 (3)	1	2	(1)
Basal cell carcinoma	529 (43)	-	-	-	-	-	-	-	-	-	-	-	-
Transitional cell ca.	156	-	-	-	-	-	-	-	-	-	-	-	-
Adenocarcinoma	2657 (201)	-	-	-	-	56 (1)	2	9 (1)	6 (6)	17(14)	11 (7)	14(14)	
Mucoepidermoid carcinoma	4 (1)	-	-	-	-	-	-	-	-	-	-	-	-
Fibrosarcoma	-	-	-	-	-	-	-	-	-	-	-	-	-
Fibrohistiocytic sarcoma	11 (1)	-	-	-	-	-	-	-	-	-	-	-	-
Liposarcoma	4	-	-	-	-	-	-	-	-	-	-	-	-
Leiomyosarcoma	15	-	-	-	-	-	-	2	-	-	-	-	-
Rhabdomyosarcoma	3 (2)	-	-	-	-	-	-	-	(1)	-	-	-	-
Endothelial vessels sarcoma	2	-	-	-	-	-	-	-	-	-	-	-	-
Perivascular sarcoma	2	-	-	1	-	1	-	-	-	-	-	-	-
Malignant mesothelioma	7 (2)	-	-	-	-	-	-	-	-	-	-	-	-
Neural sarcoma	8 (1)	-	-	-	5 (1)	-	-	-	-	-	-	-	-
Malignant paraganglioma	-	-	-	-	-	-	-	-	-	-	-	-	-
Malignant mesenchymoma	-	-	-	-	-	-	-	-	-	-	-	-	-
Miscellaneous sarcoma	7 (2)	-	-	-	1	-	-	-	-	-	-	-	-
Unclassified													
soft tissue sarcoma	6 (2)	-	-	-	-	-	-	-	-	-	-	-	-
Osteosarcoma	5	-	-	-	-	-	-	-	-	-	-	-	-
Chondrosarcoma	7	-	-	-	-	-	-	-	-	-	-	-	-
Complex mixed and stromal malignoma	14	-	-	-	-	-	-	-	-	-	-	-	-
Retinoblastoma	1	-	1	-	-	-	-	-	-	-	-	-	-
Cystosarcoma phyllodes	1	-	-	-	-	-	-	-	-	-	-	-	-
Malignant melanoma	207 (4)	9	-	-	-	-	-	-	-	(1)	-	1	2
Specialized gonadal malignoma	-	-	-	-	-	-	-	-	-	-	-	-	-
Dysgerminoma and seminoma	39	-	-	-	-	-	1	-	-	-	-	-	-
Other germ cell malignoma	32	-	-	-	-	-	1	1	-	-	-	-	-
Trophoblastic malignoma	5	-	-	-	-	-	-	-	-	-	-	-	-
Brenner tumor	-	-	-	-	-	-	-	-	-	-	-	-	-
Malignant glioma	69	-	-	65	-	4	-	-	-	-	-	-	-
Malignant meningioma	-	-	-	-	-	-	-	-	-	-	-	-	-
Non Hodgkin lymphoma	149 (29)	-	-	5	-	(1)	1 (1)	-	-	-	-	-	-
Hodgkin lymphoma	34 (6)	-	-	-	-	-	-	-	-	-	-	-	-
Plasma cell tumors	42 (23)	-	-	-	-	-	-	-	-	-	-	-	-
Leukemia except chronic lymphoid	70 (18)	-	-	-	-	-	-	-	-	-	-	-	-
Chronic lymphoid leukemia	53 (21)	-	-	-	-	-	-	-	-	-	-	-	-
Other lymphoreticular neoplasms	-	-	-	-	-	-	-	-	-	-	-	-	-
Mast cell sarcoma	-	-	-	-	-	-	-	-	-	-	-	-	-
Miscellaneous malignoma	14 (8)	-	-	-	-	-	1 (1)	-	-	-	-	-	-
Small cell malignoma	3	-	-	-	-	-	-	-	-	-	-	-	-
Malignoma non specified	33 (21)	1	-	1	-	-	-	1	-	(1)	1 (2)	3 (4)	(1) 3 (5)

Tabela 8. Nadaljevanje - continued

<i>Histološka vrsta</i> <i>Histologic type</i>	<i>Skupaj</i> <i>All sites</i>		<i>L o k a c i j a (šifra MKB) - Site (ICD No.)</i>							
	140 - 209	200 ⁺ 202	201	203	204	205	206	207	208	209
Vse vrste - hist.(cit.) All types - hist.(cyl.)	5602(775)	97(24)	33 (5)	42(23)	76(26)	41(10)	2 (1)	4 (2)	8 (4)	3 (3)
Carcinoma non specified	335 (232)	-	-	-	-	-	-	-	-	-
Small cell carcinoma	113 (53)	-	-	-	-	-	-	-	-	-
Papillary carcinoma	3	-	-	-	-	-	-	-	-	-
Squamous carcinoma	962 (105)	-	-	-	-	-	-	-	-	-
Basal cell carcinoma	529 (43)	-	-	-	-	-	-	-	-	-
Transitional cell ca.	156	-	-	-	-	-	-	-	-	-
Adenocarcinoma	2657 (201)	-	-	-	-	-	-	-	-	-
Mucoepidermoid carcinoma	4 (1)	-	-	-	-	-	-	-	-	-
Fibrosarcoma	-	-	-	-	-	-	-	-	-	-
Fibrohistiocytic sarcoma	11 (1)	-	-	-	-	-	-	-	-	-
Liposarcoma	4	-	-	-	-	-	-	-	-	-
Leiomyosarcoma	15	-	-	-	-	-	-	-	-	-
Rhabdomyosarcoma	3 (2)	-	-	-	-	-	-	-	-	-
Endothelial vessels sarcoma	2	-	-	-	-	-	-	-	-	-
Perivascular sarcoma	2	-	-	-	-	-	-	-	-	-
Malignant mesothelioma	7 (2)	-	-	-	-	-	-	-	-	-
Neural sarcoma	8 (1)	-	-	-	-	-	-	-	-	-
Malignant paraganglioma	-	-	-	-	-	-	-	-	-	-
Malignant mesenchymoma	-	-	-	-	-	-	-	-	-	-
Miscellaneous sarcoma	7 (2)	-	-	-	-	-	-	-	-	-
Unclassified										
soft tissue sarcoma	6 (2)	-	-	-	-	-	-	-	-	-
Osteosarcoma	5	-	-	-	-	-	-	-	-	-
Chondrosarcoma	7	-	-	-	-	-	-	-	-	-
Complex mixed and stromal malignoma	14	-	-	-	-	-	-	-	-	-
Retinoblastoma	1	-	-	-	-	-	-	-	-	-
Cystosarcoma phyllodes	1	-	-	-	-	-	-	-	-	-
Malignant melanoma	207 (4)	-	-	-	-	-	-	-	-	-
Specialized gonadal malignoma	-	-	-	-	-	-	-	-	-	-
Dysgerminoma and seminoma	39	-	-	-	-	-	-	-	-	-
Other germ cell malignoma	32	-	-	-	-	-	-	-	-	-
Trophoblastic malignoma	5	-	-	-	-	-	-	-	-	-
Brenner tumor	-	-	-	-	-	-	-	-	-	-
Malignant glioma	69	-	-	-	-	-	-	-	-	-
Malignant meningioma	-	-	-	-	-	-	-	-	-	-
Non Hodgkin lymphoma	149 (29)	97 (24)	-	-	-	-	-	-	-	-
Hodgkin lymphoma	34 (6)	-	33 (5)	-	-	-	-	-	-	-
Plasma cell tumors	42 (23)	-	-	42 (23)	-	-	-	-	-	-
Leukemia except chronic lymphoid	70 (18)	-	-	-	23 (5)	41 (10)	2 (1)	4 (2)	-	-
Chronic lymphoid leukemia	53 (21)	-	-	-	53 (21)	-	-	-	-	-
Other lymphoreticular neoplasms	-	-	-	-	-	-	-	-	-	-
Mast cell sarcoma	-	-	-	-	-	-	-	-	-	-
Miscellaneous malignoma	14 (8)	-	-	-	-	-	-	-	8 (4)	3 (3)
Small cell malignoma	3	-	-	-	-	-	-	-	-	-
Malignoma non specified	33 (21)	-	-	-	-	-	-	-	-	-

Tabela 9. Število primerov ne-Hodgkinovih limfomov* po lokaciji, spolu in starosti - Slovenija 1994

Table 9. Total number of non-Hodgkin's malignant lymphomas* by site, sex, and age - Slovenia 1994

Šifra MKB	Lokacija Site	Spol Sex	Vse starosti All ages	Starost Age																	?
				0-	5-	10-	15-	20-	25-	30-	35-	40-	45-	50-	55-	60-	65-	70-	75-	80+	
	Vse lokacije All sites	Skupaj Total	178	1	-	3	1	2	5	5	5	12	6	11	12	32	25	15	14	29	-
		Moški Male	82	-	-	2	1	2	2	3	4	5	3	7	9	16	9	5	5	9	-
		Ženske Female	96	1	-	1	-	-	3	2	1	7	3	4	3	16	16	10	9	20	-
**	Glava in vrat Head and neck	M	4	-	-	-	-	-	-	-	-	-	-	-	1	2	-	-	1	-	
		Ž	11	-	-	-	-	-	-	-	1	1	1	1	1	1	1	1	1	5	-
151	Želodec Stomach	M	9	-	-	-	-	-	-	1	1	1	1	1	2	1	1	-	-	-	
		Ž	9	-	-	-	-	1	-	-	-	-	-	-	2	2	1	1	2	-	
152	Tanko črevo Small intestine	M	1	-	-	1	-	-	-	-	-	-	-	-	-	-	-	-	-	-	
		Ž	2	-	-	-	-	-	-	-	-	-	1	-	-	-	1	-	-	-	
153	Debelo črevo Colon	M	1	-	-	-	-	-	-	-	-	-	-	-	1	-	-	-	-	-	
		Ž	2	-	-	-	-	-	-	-	-	-	-	-	-	-	1	-	1	-	
157	Trebušna slinavka Pancreas	M	-	-	-	-	-	-	-	-	-	-	-	-	-	-	-	-	-	-	
		Ž	1	-	-	-	-	-	-	-	-	-	-	-	-	1	-	-	-	-	
170	Kosti Bone	M	1	-	-	-	-	-	-	-	-	-	-	-	-	1	-	-	-	-	
		Ž	-	-	-	-	-	-	-	-	-	-	-	-	-	-	-	-	-	-	
171	Mehka tkiva Soft tissue	M	-	-	-	-	-	-	-	-	-	-	-	-	-	-	-	-	-	-	
		Ž	1	-	-	-	-	-	-	-	-	-	-	-	1	-	-	-	-	-	
173	Koža Skin	M	2	-	-	-	-	-	-	-	-	-	-	-	-	-	-	-	2	-	
		Ž	2	-	-	-	-	-	-	-	1	-	-	-	-	-	-	-	1	-	
186	Modo Testis	M	1	-	-	-	-	-	-	-	-	-	-	-	-	1	-	-	-	-	
189	Ledvica, sečevod, drugo Kidney, ureter, etc.	M	1	-	-	-	-	-	1	-	-	-	-	-	-	-	-	-	-	-	
		Ž	1	-	-	-	-	-	-	-	-	-	-	-	-	-	-	-	1	-	
191	Možgani Brain	M	3	-	-	-	-	-	-	-	-	-	-	1	-	1	1	-	-	-	
		Ž	2	-	-	-	-	-	-	-	-	-	-	-	1	1	-	-	-	-	
192	Živčevje, drugo Nervous system, other	M	1	-	-	-	-	-	1	-	-	-	-	-	-	-	-	-	-	-	
		Ž	-	-	-	-	-	-	-	-	-	-	-	-	-	-	-	-	-	-	
193	Ščitnica Thyroid	M	-	-	-	-	-	-	-	-	-	-	-	-	-	-	-	-	-	-	
		Ž	2	-	-	-	-	-	-	-	-	-	-	-	-	-	1	1	-	-	
202	Bezgavke Lymph nodes	M	58	-	-	1	1	2	2	1	3	4	2	5	6	11	5	4	5	6	
		Ž	63	1	-	1	-	2	2	1	5	3	2	3	10	10	6	6	11	-	

* Vključeni so vsi citološko in/ali histološko potrjeni primeri
All cases included have been cytologically or histologically verified

** Šifre MKB/ICD Nos.: 141, 142, 146, 160

Tabela 10. Število novih primerov raka po bolnišnicah ugotovitve diagnoze ter število in odstotek primerov, napoteni na Onkološki inštitut (OI) - Slovenija 1994

Table 10. Number of new cancer cases diagnosed by reporting hospitals, and number and percentage of cases referred to the Institute of Oncology (IO), Ljubljana - Slovenia 1994

<i>Bolnišnice</i>	<i>Število novih primerov</i>	<i>Napoteni na OI</i>	
<i>Hospitals</i>	<i>Number of new cases</i>	<i>Število</i>	<i>Odstotek*</i>
		<i>Referred to the IO</i>	<i>Number</i>
			<i>Per cent*</i>
Skupaj	6 893	3 645	53
Total			
Onkološki inštitut, Ljubljana	800	800	100
Institute of Oncology, Ljubljana			
Klinični center, Ljubljana	2 365	1 239	52
University Medical Center, Ljubljana			
Dermatološka klinika	168	14	8
Gastroenterološka interna klinika	125	46	37
Ginekološka klinika	192	140	74
Infekcijska klinika	20	10	50
Inštitut za gerontologijo	25	11	44
Inštitut za pljučne bolezni in tbc, Golnik	453	254	56
Interna klinika	181	52	29
Kirurška gastroenterološka klinika	332	185	56
Klinična bolnišnica za pediatrijo	29	25	86
Klinična bolnišnica za psihiatrijo	1	1	
Klinika za maksilofacialno kirurgijo	40	32	80
Klinika za nevrokirurgijo	56	35	63
Klinika za plastično kirurgijo in opeklino	92	24	26
Klinika za torakalno kirurgijo	87	48	55
Nevrološka klinika	38	25	66
Očesna klinika	14	11	68
Ortopedska klinika	12	12	
Otorinolaringološka klinika	229	198	86
Travmatološka klinika	2	2	
Urološka klinika	269	114	42
Splošne in specialistične bolnišnice	3 659	1 561	43
General and special hospitals			
Splošna bolnišnica Brežice	62	34	55
Splošna bolnišnica Celje**	582	262	45

cont. ↓

Tabela 10. Nadaljevanje - continued

<i>Bolnišnice</i>	<i>Število novih primerov</i>	<i>Napoteni na OI</i>	
<i>Hospitals</i>	<i>Number of new cases</i>	<i>Število</i>	<i>Odstotek*</i>
		<i>Referred to the IO</i>	<i>Number</i>
			<i>Per cent*</i>
Splošna bolnišnica Jesenice	126	77	61
Splošna bolnišnica Izola	207	100	48
Splošna bolnišnica Maribor	1 010	393	39
Splošna bolnišnica Murska Sobota	347	110	32
Splošna bolnišnica Nova Gorica	327	128	39
Splošna bolnišnica Novo mesto	397	163	41
Splošna bolnišnica Ptuj	85	51	60
Splošna bolnišnica Slovenj Gradec	239	79	33
Splošna bolnišnica Trbovlje	58	21	36
Bolnišnica za ginekologijo in porodništvo Kranj	32	19	59
Bolnišnica za ženske bolezni in porodništvo Postojna	26	22	85
Bolnišnica za zdravljenje in rehabilitacijo pljučnih bolnikov Sežana	54	28	52
Ortopedska bolnica Valdoltra	1	1	
Psihiatrična bolnišnica Begunje	-	-	
Psihiatrična bolnišnica Idrija	2	-	
Zasebne ordinacije	104	73	70
Drugi zdravstveni zavodi	69	45	65
Other health institutions			

* Odstotki niso računani pri številih pod 15
Percentages are not calculated for less than 15 cases

** Vključno bolnišnica Topolšica
Including hospital Topolšica

Tabela 11. Število in odstotek novih primerov raka, ugotovljenih v bolnišnicah, po stadiju, lokaciji in spolu - Slovenija 1994

Table 11. Number and percentage of new cancer cases reported by hospitals by stage, site and sex - Slovenia 1994

Šifra MKB	Lokacija	Spol	Število primerov	Lokaliziran		S t a d i j				Neznan	
				Število	Odstotek*	Regionarna razširitev	Oddaljena razširitev	Število	Odstotek*	Število	Odstotek*
ICD No.	Site	Sex	Number of cases	Localized Number	Per cent*	Regional Number	Per cent*	Remote Number	Per cent*	Unknown Number	Per cent*
140 209	Vse lokacije All sites	Skupaj Total	6893	2733	40	1925	28	1823	26	412	6
		Moški Male	3483	1248	36	1011	29	986	28	238	7
		Ženske Female	3410	1485	44	914	27	837	25	174	5
140	Ustnica	M	22	16	73	6	27	-	-	-	-
	Lip	Ž	2	2		-		-		-	
141	Jezik	M	46	15	33	21	46	9	20	1	2
	Tongue	Ž	5	1		3		1		-	
142	Slinavke	M	4	1		2		1		-	
	Salivary glands	Ž	11	7		3		1		-	
143	Dlesni	M	4	1		3		-		-	
	Gum	Ž	2	-		2		-		-	
144	Ustno dno	M	36	14	39	18	50	4	11	-	-
	Floor of mouth	Ž	3	1		2		-		-	
145	Usta, drugo	M	18	6	33	8	44	4	22	-	-
	Mouth, other parts	Ž	3	-		3		-		-	
146	Orofarinks	M	82	7	9	62	76	11	13	2	2
	Oropharynx	Ž	15	1	7	13	87	1	7	-	-
147	Epifarinks	M	5	-		4		1		-	
	Epipharynx	Ž	4	1		2		1		-	
148	Hipofarinks	M	46	3	7	41	89	2	4	-	-
	Hypopharynx	Ž	-	-		-		-		-	
149	Žrelo, neoznačeno	M	1	-		-		-		1	
	Pharynx, not specified	Ž	1	-		1		-		-	
150	Požiralnik	M	79	23	29	27	34	16	20	13	16
	Esophagus	Ž	10	-		4		-		6	
151	Želodec	M	278	64	23	102	37	84	30	28	10
	Stomach	Ž	182	35	19	61	34	58	32	28	15
152	Tanko črevo	M	1	1		-		-		-	
	Small intestine	Ž	7	3		3		1		-	

cont. ↓

Tabela 11. Nadaljevanje - continued

Šifra MKB	L o k a c i j a	Spol	Število primerov	Lokaliziran		S t a d i j				Neznan	
				Število	Odstotek*	Regionarna razširitev	Odstotek*	Oddaljena razširitev	Odstotek*	Število	Odstotek*
ICD No.	Site	Sex	Number of cases	Localized		S t a g e				Unknown	
				Number	Per cent*	Regional	Per cent*	Remote	Per cent*	Number	Per cent*
153	Debelo črevo	M	210	20	10	107	51	71	34	12	6
	Colon	Ž	203	27	13	107	53	50	25	19	9
154	Rektum	M	224	44	20	100	45	50	22	30	13
	Rectum, anus	Ž	189	27	14	93	49	46	24	23	12
155	Jetra	M	45	16	36	9	20	20	44	-	-
	Liver	Ž	27	5	19	7	26	11	41	4	15
156	Žolčnik, žolčni vodi	M	33	7	21	10	30	10	30	6	18
	Gall bladder, bile ducts	Ž	57	8	14	23	40	21	37	5	9
157	Trebušna slinavka	M	93	14	15	29	31	36	39	14	15
	Pancreas	Ž	75	4	5	23	31	38	51	10	13
158	Retro-, peritonej	M	3	-	-	1	-	2	-	-	-
	Retro-, peritoneum	Ž	3	-	-	1	-	1	-	1	-
159	Prebavila, drugo	M	-	-	-	-	-	-	-	-	-
	Digestive organs, other	Ž	1	-	-	-	-	1	-	-	-
160	Nos, obnosne votl., drugo	M	14	2	-	6	-	6	-	-	-
	Nose, sinuses, etc.	Ž	9	4	-	2	-	3	-	-	-
161	Grlo	M	98	39	40	54	55	5	5	-	-
	Larynx	Ž	10	7	-	2	-	-	-	1	-
162	Sapnik, sapnica, pljuča	M	713	187	26	242	34	248	35	36	5
	Trachea, bronchus, lung	Ž	154	47	31	39	25	56	36	12	8
163	Plevra, mediastin., drugo	M	13	8	-	2	-	2	-	1	-
	Pleura, mediastinum, etc.	Ž	4	1	-	1	-	1	-	1	-
170	Kosti	M	9	4	-	5	-	-	-	-	-
	Bone	Ž	7	1	-	3	-	2	-	1	-
171	Mehka tkiva	M	11	7	-	2	-	2	-	-	-
	Soft tissues	Ž	19	14	74	2	11	3	16	-	-
172	Koža, maligni melanom	M	95	69	73	19	20	2	2	5	5
	Skin, malignant melanoma	Ž	100	84	84	10	10	1	1	5	5
173	Koža, drugi malignomi	M	323	312	97	8	2	3	1	-	-
	Skin, other malignancies	Ž	432	426	99	4	1	1	-	1	-
174	Dojka	M	13	7	-	4	-	2	-	-	-
	Breast	Ž	714	283	40	347	49	76	11	8	1
180	Maternica, vrat	Ž	182	97	53	41	23	44	24	-	-
	Uterus, cervix										
181	Horioepiteliom	Ž	1	1	-	-	-	-	-	-	-
	Chorioepithelioma										

cont. ↓

Tabela 11. Nadaljevanje - continued

Šifra MKB	L o k a c i j a	Spol	Število primerov	Lokaliziran		S t a d i j				Neznan	
				Število	Odstotek*	Regionarna razširitev	Odstotek*	Oddaljena razširitev	Odstotek*	Število	Odstotek*
ICD No.	Site	Sex	Number of cases	Localized		S t a g e				Unknown	
				Number	Per cent*	Regional	Per cent*	Remote	Per cent*	Number	Per cent*
182	Maternica, telo, drugo Uterus, corpus, etc.	Ž	233	185	79	23	10	21	9	4	2
183	Jajčnik, jajcevod, drugo Ovary, Fallopian tube, etc.	Ž	162	33	20	21	13	103	64	5	3
184	Nožnica, vulva, drugo Vagina, vulva, etc.	Ž	35	19	54	10	29	6	17	-	-
185	Prostata Prostate	M	238	116	49	25	11	51	21	46	19
186	Modo Testis	M	64	37	58	22	34	5	8	-	-
187	Penis, obmodek, drugo Penis, epididymis, etc.	M	5	3		1		-		1	
188	Mehur Bladder	M	110	61	55	28	25	7	6	14	13
		Ž	45	26	58	9	20	6	13	4	9
189	Ledvica, sečevod, drugo Kidney, ureter, etc.	M	100	60	60	19	19	19	19	2	2
		Ž	61	39	64	7	11	13	21	2	3
190	Oko Eye	M	10	7		3		-		-	
		Ž	4	4		-		-		-	
191	Možgani Brain	M	45	45	100	-	-	-	-	-	-
		Ž	32	32	100	-	-	-	-	-	-
192	Živčevje, drugo Nervous system, other	M	6	3		1		2		-	
		Ž	6	5		-		1		-	
193	Ščitnica Thyroid	M	14	7		5		2		-	
		Ž	53	30	57	18	34	5	9	-	-
194	Endokrine žleze, druge Endocrine glands, other	M	4	3		-		1		-	
		Ž	6	2		1		-		3	
195	Slabo opredeljena lokaliz. Ill-defined site	M	7	2		2		2		1	
		Ž	21	2	10	6	29	7	33	6	29
196	Metastaze v bezgavkah Lymph node metastases	M	20	-	-	-	-	2	10	18	90
		Ž	17	-	-	-	-	-	-	17	100
197	Met. v dihalih, prebavilih Respiratory, digestive tract met.	M	33	-	-	-	-	31	94	2	6
		Ž	55	-	-	-	-	54	98	1	2
198	Metastaze, drugje Metastases, other	M	53	-	-	-	-	52	98	1	2
		Ž	15	-	-	-	-	15	100	-	-
199	Malignomi, neopredeljeni Malignancies, unspecified	M	50	-	-	-	-	50	100	-	-
		Ž	34	-	-	-	-	33	97	1	3

cont. ↓

Tabela 11. Nadaljevanje - continued

Šifra MKB	L o k a c i j a	Spol	Število primerov	I		S t a d i j II		(A n n - A r b o r) III + IV		Neznani	
				Število	Odstotek*	Število	Odstotek*	Število	Odstotek*	Število	Odstotek*
ICD No.	Site	Sex	Number of cases	I		S t a g e II		(A n n - A r b o r) III + IV		Unknown	
				Number	Per cent*	Number	Per cent*	Number	Per cent*	Number	Per cent*
200	Ne-Hodgkinovi limfomi	M	58	14	24	9	16	31	53	4	7
+ 202	Non-Hodgkin's limfomas	Ž	63	17	27	10	16	31	49	5	8
201	Hodgkinov limfom Hodgkin's disease	M	17	3	18	4	24	10	59	-	-
		Ž	21	4	19	7	33	9	43	1	5

* Odstotki niso računani pri številih pod 15

* Percentages are not calculated for less than 15 cases

INCIDENCA RAKA V SLOVENIJI 1994
CANCER INCIDENCE IN SLOVENIA 1994

Po mnenju Ministrstva za kulturo Republike Slovenije, št. 415-184/97 z dne 11. februar 1997, šteje publikacija med proizvode, za katere se plačuje 5-odstotni davek od prometa proizvodov.

